



## BVision PPC Installation User Guidance

© copyright 1998 phase 5 digitally products, in der Au 27, D-61440 Oberursel

Product names used are registered designs and/or registered trade marks of the relevant manufacturer. All rights and changes to the technology and scope of supply are reserved. The text, illustrations, programs and hardware have been produced with the utmost care. Phase 5 digital products accepts neither legal responsibility nor liability for any errors remaining in the data or the consequences thereof. All rights are reserved.

### **IMPORTANT: PRIOR TO OPERATING THE BVISION PPC:**

Please you note that for the problem-free operation of the BVisionPPC Graphics card, the firmware must be updated to version V45.6 or greater on your BLIZZARD603e/e+. If you have not yet installed this version, you can download an update from our Internet server ([www.phase5.de](http://www.phase5.de)) or obtain it from your retailer.

Many thanks for choosing our product. The BVisionPPC graphics card represents a new generation of graphics boards for Blizzard 603e/e+ accelerated Amiga systems. By use of the fast and modern display processor PERMEDIA 2 and the direct bus connection to the Blizzard 603e/e+PPC, the BVision PPC provides an outstanding performance in all display operations and allows fast and efficient work with todays most demanding applications and at high resolutions. Performance and functionality of the BVision PPC define a new standard in its class: Thank you that you decided for our product. The BVision PPC is a high performance graphics card for the direct bus of the Blizzard603e/e+ processor cards. By use of the Permedia 2 fast graphics processor, the direct bus connection and with 8MB SGRAM the BVisionPPC offers outstanding performance in all graphics operations and allows fast and efficient work with today's most demanding applications and at high resolutions.

The BVisionPPC graphics card runs with the following minimum system requirements:

- **Amiga 1200 in Tower conversion with Blizzard603e/e+ processor card;**
- **min. Kickstart 3.0;**
- **CybergraphX V3.0 release 70a or higher;**
- **VGA monitor with 31Khz horizontal line frequency;**
- **min. 8 MB free fast ram.**

**Note:** Although the BVisionPPC can be fitted into a A1200 Desktop case, its operation is not intended in it due to electrical supply requirements.

On receipt of your BVisionPPC please check the contents are complete. The packing should contain:

- **The BVision PPC graphics card;**
- **A VGA Connector module with cable;**
- **An installation disk;**
- **This manual.**

If any of these parts are missing, please refer to your retailer.

## INSTALLATION OF THE BVISION PPC



**Attention! Before starting with the installation of the BlizzardPPC you should by all means read this manual, otherwise the board or the computer could suffer damage. Please also refer to our warranty conditions in respect to unadequate handling and unauthorized repair.**

The installation of the BVision PPC Graphics card on the direct bus connection of the Blizzard603e/e+ accelerator board is relatively simple and requires no special technical knowledge; some experience with the installation of expansions is however helpful. If you prefer not to install the card yourself, please consult your retailer, who can install the map - if necessary for a small charge.



**Advice: The following installation guidance refers to the installation of the card to the Blizzard603e/e+ processor card. For details of the installation of extensions in a particular tower housing for the Amiga 1200, please refer to the user manual relating to your computer system. This should instruct as to how this model is to be opened, and how to install the system processor and other extension cards.**

The BVision PPC graphics card is installed to the direct bus connection of the Blizzard 603e/e+ accelerator board, as indicated in figure 1. The plug connectors of the diagram and of the processor board must be aligned, and connected with light pressure. Once the BVision PPC is attached to the direct bus connector of the Blizzard 603e/e+, it must be secured with the two enclosed M2 nuts and bolts, through the two bolt holes beside the direct bus connector. The screws should be only lightly tightened, in order to secure the graphics card to the processor board. Do not use excessive force.

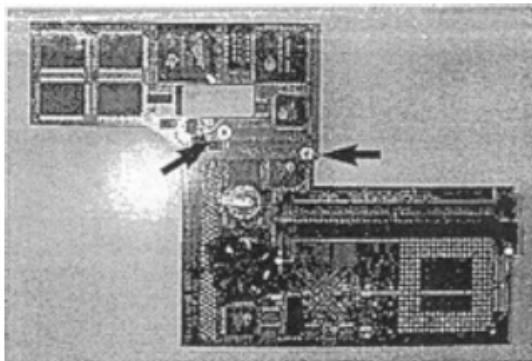
The 10-pin plug of the shielded flat cable of the VGA Connector module is inserted into the socket provided for it on the BVisionPPC, as indicated in figure 2. The VGA connector must be fed through a suitable opening from the Tower case - if necessary using an optional back plate.

**Important:** In order to ensure a stable voltage supply of the system, it is necessary with some tower solutions to connect a power cable for the 3.5" floppy from the psu to the power connection for the floppy disk on the A1200-Mainboard in order to supply 5V directly to the motherboard. If this is not done, it is possible that insufficient current is supplied to the system through the motherboard, which can result in malfunctioning or unstable operation. This connection is shown in figure 2 in the lower half of the picture.

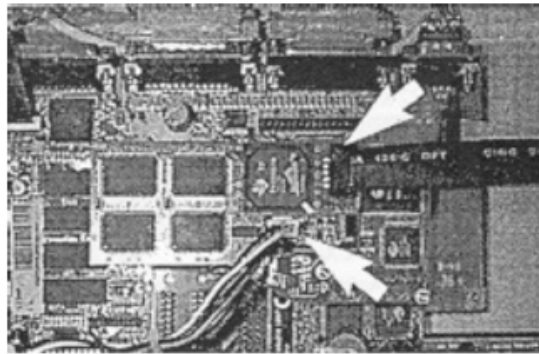
## CONNECTING THE MONITOR

Connect the monitor cable to the VGA port on the BVisionPPC connector module. (See figure 2). This connector always outputs the BVisionPPC video signal. You can use a 15kHz monitor in parallel on the standard Amiga RGB port for a two monitor system. The 3pole Mini-DIN connector above the VGA connector is for the use of an optional LCD-3D-Shutterglasses system (VESA standard).

**Figure 1: The BVision PPC is attached to the Blizzard 603E/E+.**



**Figure 2: The VGA Connector Module is attached to the BVision PPC. Additionally the floppy power cable from the psu is attached to the A1200 floppy power connector.**



## SOFTWARE INSTALLATION

After inserting the installation diskette, double click with the mouse on the diskette icon to open it. Now double click on the diskette to start the installation program. The installation is performed completely automatically. When prompted for the monitor type you are using, click on the button corresponding to the maximum line frequency of your monitor. You will find this in the monitor user manual. **Please refer to the README-files on the disk for latest information of the software and the provided utilities.**

During installation the following files are copied into the appropriate directories:

- devs:monitors/CVisionPPC
- libs:cgxsystem.library
- libs:cgxvideo.library
- libs:cgxbootpic.library
- sys:prefs/presets/monitors/Monitor xxKhz
- sys:prefs/env archive/cybergraphx/CVisionPPCMonitor

The programs perform the following tasks:

Monitor file CVisionPPC	This is the monitor driver of the BVisionPPC; it contains the basic functions to respond around the graphics card and is the link between hardware and software.
LIBRARIES <ul style="list-style-type: none"> <li>• cgxsystem.library</li> <li>• cgxvideo.library</li> <li>• cgxbootpic.library</li> </ul>	This software part is the actual intuition emulation. It is responsible for the fact that your BVisionPPC can communicate with intuition. Each change on your screen is analyzed by these LIBRARIES and "translated" for your BVisionPPC.
monitor xxKhz	This Env variable contains all monitor-specific attitudes. These would be resolution, colour depth, line frequencies.

## RESOLUTIONS, COLOUR DEPTHS AND FREQUENCIES

After installation of the software, a range of resolutions, colour depths and frequencies are available which allow operation with most modern VGA and Multisync monitors. The selection of the resolution and colour depth with which you would like to work, is performed through the standard screenmode requester of the Amiga operating system (prefs:screenmodes). Thus the BVisionPPC is immediately operational without further adjustment.

Over the software CGXMODE also individual screenmodes modes can be defined. Instructions for the use of CGXMODE are on our Website at [www.phase5.de](http://www.phase5.de).

In this documentation also further technical details are described, however these are not needed for normal operation.

## SUPPORTED SCREENMODES OF THE BVISION PPC GRAPHICS CARD:

Resolution (pixels)	8 bits (256 colours)	16 bits (65,535 colours)	24 bits (16.7million colours)
640 x 480	60 – 140 Hz	60 – 140 Hz	60 – 120 Hz
800 x 600	60 – 120 Hz	60 – 120 Hz	60 – 120 Hz
832 x 624	75 – 120 Hz	75 – 120 Hz	75 – 120 Hz
1024 x 768	75 – 120 Hz	75 – 120 Hz	75 – 120 Hz <sup>1)</sup>
1152 x 900	75 – 120 Hz	75 – 100 Hz	75 – 100 Hz <sup>1)</sup>
1280 x 1024	60 – 100 Hz	60 – 90 Hz <sup>1)</sup>	-
1600 x 1200	60 – 80 Hz	60 – 75 Hz <sup>1)</sup>	-

<sup>1)</sup> For high resolutions and color depths the hardware acceleration and the LCD 3D Shutter Glasses support is restricted.

## **TERMS OF THE WARRANTY**

Phase5 digital products provides the registered user of this BVision PPC with a 12 month parts and labour guarantee, commencing on the date of first sale (date of the retailers invoice issued to the registered final customer). During the period of this guarantee we will remedy all defects either by exchange or repair, at our discretion, which are due to material or manufacturer's defects. Execution of the rights under this guarantee in no way affects the period of the guarantee. The guarantee specifically excludes claims for damage caused by external influences or improper use, and in particular unauthorised repairs. Any modification to the hardware, of any type, automatically invalidates any rights to claim under this guarantee. The guarantee also specifically excludes claims for operational defects of the BVision PPC or other devices connected in / to the AMIGA after the system has been altered (such as fitting new expansion cards), if it can not be proved beyond doubt that a technical defect of the BVision PPC is causing the fault. Modifications of the hardware and/or software are expressly included, which are carried out in the form of repairs, upgrades or system-updates.

Phase 5 digital products take over any no warranty whatsoever that this product is suited for a certain application.

This also expressly includes any changes to the AMIGA hardware which have been carried out by the Amiga Technologies company by way of repairs, subsequent improvements or system updates. Furthermore we accept no liability for defects or damage to devices other than the BVision PPC, nor for losses of data, which were or seem to have been directly or indirectly linked with the installation of the BVision PPC, even if we have been informed about the possibility of such a connection in advance. For memory modules supplied, the guarantee of the respective manufacturer applies exclusively.

## **TECHNICAL CONSULTATION AND SERVICE**

Should you need technical information e.g. for the installation, expansion or compatibility of your system configuration, please refer to your retailer, who will advise you with corresponding competence and offer you the suitable expansion products. The experienced Amiga resp. phase5 digital products retailers have the necessary knowledge as well as additional service information, which will contribute to fast problem solution in case of simple technical problems or compatibility matters. Also for the assessment of possible guarantee cases (please refer to the chapter "Handling of guarantee cases, returns"), your dealer can assist you.

Furthermore you will receive comprehensive support information through our World Wide Web server in the Internet. You will reach our homepage under:

<http://www.phase5.de>

Here you can request all sorts of technical information to actual and future products, which are important for the general information or technical support. These infos are updated regularly to provide you with the latest suggestions and advice regarding compatibility problems, tested third party add-ons, known bugs and how to work around. The tips and advices are always up to date. Obviously you can download the latest software and driver versions.

In rare cases your dealer will not be able to solve your problem to your convenience. In that case, or if you are not online and need a update, please feel free to contact the phase 5 support-department via fax or phone, or, if you like better, write us a letter.

## **GUARANTEE CLAIMS, RETURNS**

Guarantee claims in Germany should be made direct to our Support Department  
phase 5 digital products  
In der Au 27  
D-61440 Oberursel  
Telephone:(06171) 628455  
fax: (06171) 628456

In all other countries please contact our distributors or your dealer. Goods may only be returned after prior consultation with and authorisation by our support department. You will be given a Return Material Authorisation (RMA) number, which must be clearly marked on the goods returned. **Please note that returns without a RMA-number cannot be accepted! Also returns for which postage has not been paid cannot be accepted.** If no defect is found on an authorised return a processing fee of USD 35.00 or DM 60,00 will be charged. If a defect is found which is not covered by the guarantee then the processing fee will be charged as well as an additional repair fee, dependant on the defect. No liability can be accepted for damage during transit due to unsatisfactory packaging when returning devices. Always use the original packaging when returning a BVision PPC and also a sturdy outer packing (e.g. post office parcel) and if necessary padding (e.g. newspaper)



This BVisionPPC Graphics card for installation and operation in AMIGA 1200 computers in CE conformant and sufficiently shielded Tower housings corresponds to the basic requirements of the law over the electromagnetic compatibility in accordance with the European standard EN55022 class B.

**This page is not translated from the original manual – it is just a note on the translation, and a short FAQ added to save people some time, and save Piru from repeating himself ad infinitum ;-), thus increasing his blood pressure.**

## NOTE ON THE TRANSLATION

This document was translated from the German original Phase 5 document “**BVISION PPC INSTALLATIONS-/ ANWENDERANLEITUNG**“. Whilst I have tried to accurately retain the ambiguity of the original document I accept no responsibility for any damage, loss of hair or madness induced by inaccuracies in the translation, or any other mistakes, or misinformation included in the text.

In translating the document reference was made to the English documents “Cybervision PPC User’s guide,” “Blizzard 603e/603e+ Power Board User’s Guide” and “Cyberstorm PPC Users Manual” [sic].

Altavista Babel fish and Google translation tool also helped (especially with the long words).

This translation is free to distribute as far as I am concerned. However this does not affect any rights held by Phase 5 or the holders of Phase 5’s IP.

## FAQ

- Q** I have installed the CGXv3/CGXv4 software, but when I go to prefs:screenmodes there are no BVision/CGX screenmodes to select – is my board broken?
- A** Maybe, but probably not – there is a compatibility problem between exec library >40 and CyberGraphX software (only up to cgxv42\_r2\_pre8).  
You can either:
- Update to the latest CGX (at this time CGXv4.2 rc6)
    - This requires the CGXv4 CD, and the 4.2rc6 patch available at <http://powerup.amigaworld.de/index.php?lang=en&page=14> or <http://phase5.a1k.org/index.php?id=3>.
- or
- Install the execv44beta4 patch from Piru’s homepage (<http://www.iki.fi/sintonen/sw.html>) – this will allow you to use the BVision with CGX v3 or v4.
- Please read the associated .readme files before installing.
- Q** My BVision/Blizzard 603e/e+ came from some scally on ebay, and has no disk with it. Where can I get the installation software?
- A** Many places, including:
- <http://powerup.amigaworld.de/index.php?lang=en&page=14>
  - <http://phase5.a1k.org/index.php?id=3>
  - <http://amiga.resource.cx/>
  - <http://www.amiga-hardware.com/>