

# 1200 S / 1200 P

deutsch / english



## Introduction

Thank you very much for purchasing the IOBlix . Developing the IOBlix (say: I-O-B-lix) we put much value to high compatibility. Being an interface card the IOBlix is the connection between the Amiga and the peripheral devices. This means

- High compatibility with all peripheral devices
- High compatibility with all common software that uses the ports

When using the IOBlix please remember that there are programmes which address the ports low level to use the special feature of the internal Amiga ports. Programms like this are non system conform and cannot operate with the IOBlix.

If you have any further questions which are not explained in this manual or in the manuals on the install disk feel free to contact our service hotline: Mo.-Do. 5.00-6.00 p.m. at +49 5651 8097 21. Software Updates for the IOBlix will be available on our web site at <http://www.rbm.de>. Our E-Mail is support@rbm.de.

## Electromagnetic compatibility (EMC) / CE

Electromagnetic compatibility is supposed to guarantee the „compatibility“ of different electronic devices. This means that your computer must not interfere with your neighbours radio. Transferring your Amiga into a tower case is not clearly defined according to the EMC. For example older ZorroII-Cards do not have the CE-sign so they were never checked for EMC. Anyway does the combination of products with a CE-sign not imply the EMC of the whole product.

**We emphasize that rebuilding your Computer into a new case and adding any components, you become the manufacturer/producer of this system under the law of EMC. So you are also responsible for the electromagnetic compatibility of your system!**

## ESD-Warning

- Electronic devices are sensitive of becoming charged. Do not wear woollens and don't work in a room where you are always getting electrostatic shocked.
- Electronic devices are sensitive to mechanic strains. Don't use force, if something does not fit at once. There's nothing better than sensitivity!
- Whatever you do, do it with calmness and coolness. A hectic rush is the origin of all mistakes!

© 1998 RBM Bernd Rudolf

Alle Rechte weltweit vorbehalten

Produkte, die in diesem Handbuch erwähnt werden, können Warenzeichen oder eingetragene Warenzeichen der jeweiligen Firmen sein und sind hiermit anerkannt.

Der Hersteller RBM Digitaltechnik Bernd Rudolf übernimmt keine Haftung für mittelbare oder unmittelbare Schäden, die durch unsachgemäßen Gebrauch verursacht wurden. Eine Haftung für Schäden, die durch Unzulänglichkeiten und/oder Fehler in der Anleitung entstehen können, kommt nur in Frage, wenn dem Hersteller oder seinen Mitarbeitern grobe Fahrlässigkeit nachgewiesen werden kann.

## Content of delivery

### IOBlix 1200 S

- 1 serial port
- 1 serial connection cable 25 pin with bracket
- 1 Installation disc

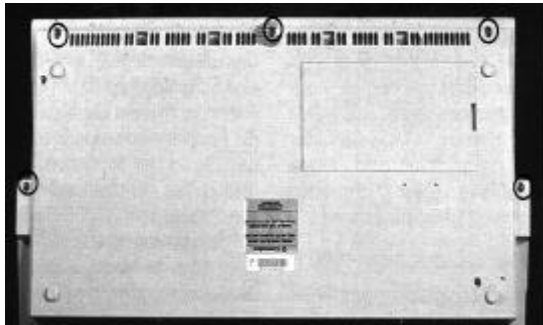
### IOBlix 1200 P

- 1 parallel port
- 1 parallel connection cable 25 pin with bracket
- 1 Installation disc

## Hardware installation

Please note that you might loose the warranty of your Amiga now. If you are not sure about this contact your local dealer.

Your Amiga is hold together with five screws from the bottom. Three of them are at the front and two at the sides (picture 1). When you have loosen all screws you can take of the top of the Amiga housing after disconnecting the LED-cable. Before you can take out the keyboard to the upper back side of your Amiga you have to diconnect it. So lift up the top of the keyboard connector on the mainboard a little bit on both sides with a screwdriver and pull out the ribbon cable carefully.



Picture 1: A1200 from bottom view

As you can see now your Amiga is surrounded with a metal shielding. Be careful!!! The shielding has sharp edges! Don't get hurt!

Search for the small cover plate that is marked in picture 2 an bend the two small brackets at both sides to an upright position. Now you can take of the cover plate and underneath it shoul look like picture 3. In the right lower corner there is a 22pin header. **Please check for the number of pins as well as for its position.** The header must be right aligned as shown in picture 3. If this is not the case with your Amiga please contact your local dealer or the RBM technical support hotline. Connect the IOBlix to this header. **Make sure that you do not miss any pins when connecting the IOBlix!**

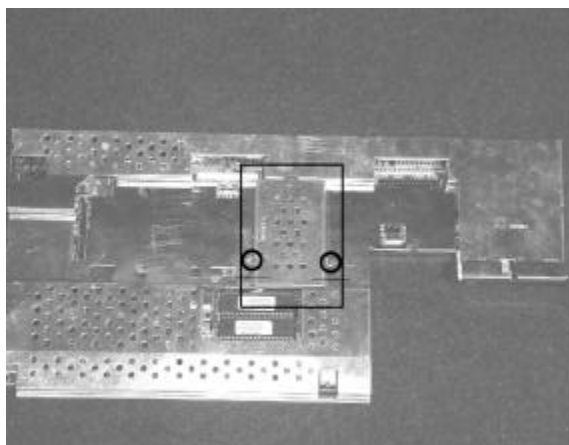


Bild 2

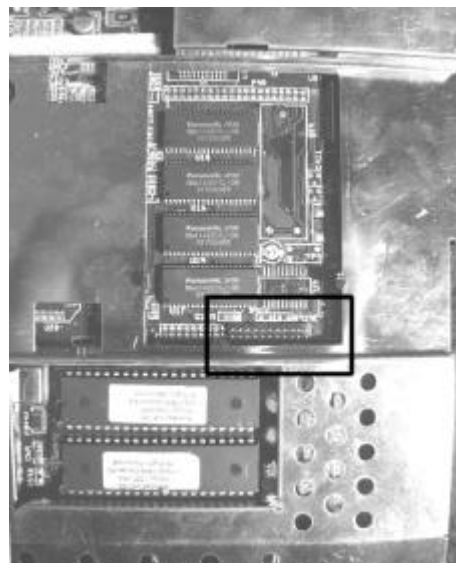
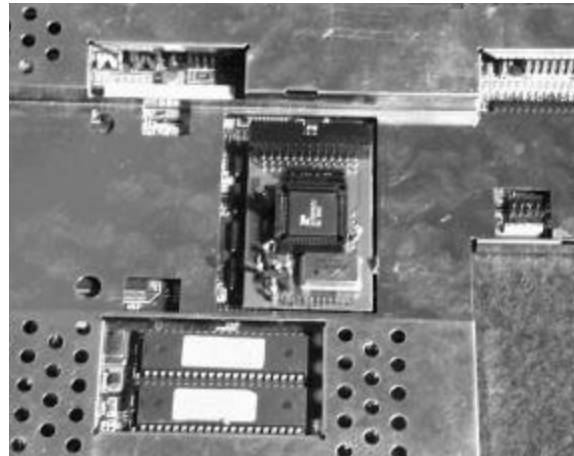


Bild 3

## Software Installation

Start your Amiga with the Workbench. Insert the IOBlix install disk into a disk drive. After a few seconds an icon named "IOBlix-Install" appears. Double click it. A window opens, in it you will find two icons named "Install IOBlix PAR" and "Install IOBlix SER". Double click the corresponding icon and the installer starts: If you are less familiar with your system we recommend to choose "Novice user" The install procedure will then run automatically.



## Connecting Peripheral Devices

When connecting peripheral devices make sure that you use the correct (external) cable which suits the requirements. Often cables have the correct connectors but they are connected in a different way. If you need a serial cable for example make sure it is labeled "serial" and "1:1" somewhere. Cables called "Null modem" are only to link two serial ports (of two computers) together. Sometimes serial ports use a 25 pol connector. Therefore special adaptors are available. Contact your local dealer for more information.

In the addendum you will find the port connections and some schematics for null modem cables.

Please do not exceed the maximum cable length: For the parallel port it is 4m (13 ft) and for the serial ports 10m (30 ft). Especially the quality of the cable is important. That means: a cable with a good shielding can transport data over a longer distance than the recommended while a cheap non shielded cable will probably not be able to run the cable length mentioned above.

Especially the serial data transfer the possible transfer rate relates directly with the cable length and quality!

**Bild 4**

## The IrDA-Interface

The IOBlix provides an IrDA port which allows a wireless data transfer via infra red between different computers or the computer and peripheral devices (such as printers etc). To do that an extra infra red send/receive Adaptor and some special software is required which will be available soon. You will find news about that at <http://www.rbm.de>

## The IOBlix Software

You can install up to four (4!) IOBlix 1200 into one Amiga by using the „Clockportexpander“. They will be addressed with different parameters (see below).

Usually („Novice installation“) you will find a drawer called „IOBlix“ on your Workbench-Partition. Here are the programmes "SetupIOBlix" and "QueryIOBlix" located.

### *SetupIOBlix*

initializes all IOBlix boards in the system and is normally executed during "user-startup". If you want to reinitialize the boards again you can run this program from a shell with the command "Setup-IOBlix reinit A1200 [SER][PAR]" (no quotation followed by return)

### *Test\_Board*

checks all IOBlix-boards in your system, by calling the „QueryIOBlix“ command and displaying the result with „more“.

### *QueryIOBlix*

checks all IOBlix-boards in your system. For the IOBlix 1200 S the result should look like the following:

```
There are 0 IOBlix boards installed in your machine
```

```
Found an IOBlix1200-board
It is configured as a serial port
  serial port #0:
    Chip: StarTech 16C650 V2 with 32 Bytes FIFO
```

For the IOBlix 1200 P the result should look like this:

```
There are 0 IOBlix boards installed in your machine
```

```
Found an IOBlix1200-board
It is configured as a parallel port
  parallel Port #0
    supported modes: SPP PS2 ECP EPP ECP/EPP ECP/PS2
    FIFO size: 16 bytes (8/8 write/read threshold)
```

### *The Devices*

In the DEVS: drawer of your Workbench there are the following devices devices:

- ioblix12ser.device
- ioblix12par.device

If you like to use a terminal program (like Ncomm, Term) to address a modem you will find a menu in the terminal program like "settings/port" where you can specify a device. This must be the "ioblix12ser.device" (no quotation, small letters). Additionally you will be asked for a "unit". The unit numbers is always 0 (zero) as long as you do not use the Clockportexpander. Otherwise you will find additional information in the manual to the Clockportexpander.

The maximum transferr-rate allowed by the ioblix12ser.device is 460kbps. Please read the chapter about cable sizes and quality with the headline „Connecting Peripheral Devices“.

### *The Handlers*

Like for the internal Amiga ports there is a handler for the IOBlix ports. With this handler you can address each port like a driver (DOS driver). So you can print the user-startup for example with "copy s:user-startup par00:" (no quotation followed by a return from a shell; assumed there is a printer connected to IOBlix board0/parallelport0).

The active dos drivers are located in the drawer DEVS:DOSDRIVERS, the others in the drawer SYS:STORAGE/DOSDRIVERS. Their names are:

- "SER00:" for the dos driver for the serial port on the IOBlix 1200S
- "PAR00:" for the dos driver for the parallel port on the IOBlix1200P

If you have installed more than one IOBlix1200 by using the Clockportexpander you will find additional information in the manual to the Clockportexpander.

### **Goodies**

There are some additions programmes in the "goodies" drawer of the installation disk which we provided for free. Please note that we cannot support these programmes!

#### *SerMouse*

SerMouse allows you to run a PC-mouse on the Amiga. A manual is provided on disk as well.

#### *NSDPatch*

NSDPatch allows you to redirect the devices for the internal Amiga ports (serial.device, parallel.device) to the IOBlix ports. This is only necessary when some software does not support a configuration for the device. A manual for NSDPatch is provided on the disk.

To map a device to another you must add the following line to the DEVS:NSDPatch.cfg (anywhere, best at the beginning or end)

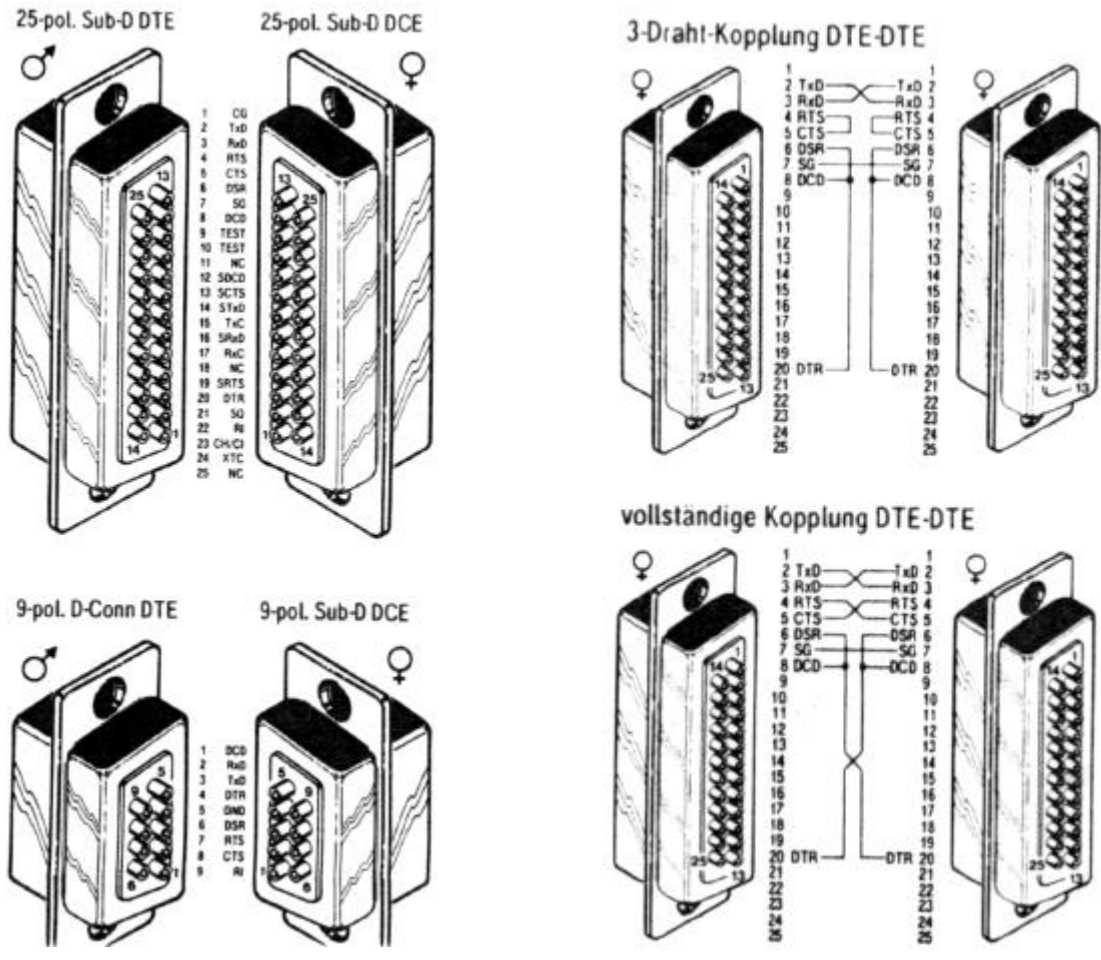
```
DEVICE parallel.device UNIT 0 MAPTODEVICE ioblix12par.device MAPTOUNIT 1
```

This maps the internal parallel port to the IOBlix1200P.

## Hardware

This chapter is for professional users only! It describes the IOBlix port, several connection cable and other features of the IOBlix ports.

The serial port



On the left hand side you see the pinning of the 9 and 25 pol connectors. On the right hand side you can see two different null modem connections where the "vollständige Kopplung DTE-DTE" should be preferred.

