

Digital BroadCaster



Digital Micronics, Inc.

Digital BroadCaster™

User's Manual

Hardware, Software and Manual

by

Digital Micronics, Inc.

2075 Corte Del Nogal, Unit N
Carlsbad, CA 92009

December 6, 1993

First Printing

DIGITAL BROADCASTER™ USER'S MANUAL

DECEMBER 6, 1993: FIRST PRINTING

COPYRIGHTS

Copyright © 1993 Digital Micronics, Inc. All Rights Reserved.

The Digital BroadCaster, and DMI 601 are Copyright © 1993 Digital Micronics, Inc. All rights reserved. This document may not in whole or in any part, be copied, photocopied, reproduced, translated, or reduced to any electronic medium or machine readable format without prior consent, in writing from Digital Micronics, Inc.

TRADEMARKS

Digital BroadCaster, DMI 601 and Edimation are trademarks of Digital Micronics, Inc. Kickstart and Workbench are trademarks and Amiga is a registered trademark of Commodore-Amiga, Inc. Other marks are trademarks of their respective holders.

DISCLAIMER

DIGITAL MICRONICS, INC. (DMI) MAKES NO WARRANTIES, EITHER EXPRESSED OR IMPLIED, WITH RESPECT TO THE PROGRAM OR HARDWARE DESCRIBED HEREIN, ITS QUALITY, PERFORMANCE, MERCHANTABILITY, AVAILABILITY, OR FITNESS FOR ANY PARTICULAR PURPOSE. THIS PRODUCT IS SOLD "AS IS." THE ENTIRE RISK AS TO ITS QUALITY AND PERFORMANCE IS WITH THE BUYER. SHOULD THE PROGRAM OR HARDWARE PROVE DEFECTIVE FOLLOWING ITS PURCHASE, THE BUYER (AND NOT DMI, THEIR DISTRIBUTORS OR THEIR RETAILERS) ASSUMES THE ENTIRE COST OF ALL NECESSARY REPAIR, CORRECTION, OR SERVICING. IN NO EVENT WILL DMI BE LIABLE FOR DIRECT, INDIRECT, INCIDENTAL OR CONSEQUENTIAL DAMAGE, OR DAMAGE RESULTING FROM LOSS OF USE OR LOSS OF ANTICIPATED PROFITS RESULTING FROM ANY DEFECT IN THE PROGRAM OR WITH THE HARDWARE EVEN IF IT HAS BEEN ADVISED OF THE POSSIBILITY OF SUCH DAMAGE

FCC NOTICE

This equipment has been found to comply with the limits for a Class A digital device, pursuant to Part 15 of the FCC Rules. These limits are designed to provide reasonable protection against harmful interference when the equipment is operated in a commercial environment. This equipment generates, uses, and can radiate radio frequency energy and, if not installed and used in accordance with the instruction manual, may cause harmful interference to radio communications. Operation of this equipment in a residential area is likely to cause harmful interference in which case the user will be required to correct the interference at his or her own expense.

Table of Contents

1.	The World of Digital Video	
2.	Concepts	
2.1	Brief Description: How the Digital Broadcaster™ Works	2-1
2.2	Benefits of the Digital Broadcaster™.	2-3
3.	Installation	
3.1	Digital Broadcaster™ Components	3-1
3.2	Hardware Requirements	3-1
3.3	Installation of Digital Broadcaster™ Hardware.	3-1
3.4	Hard Drives and Controllers.	3-4
3.5	Software Installation.	3-9
4.	Recording	
4.1	Settings	4-2
4.2	Time & Storage	4-4
4.3	Control	4-5
4.4	Audio	4-7
5.	EDImation™	
6.	Non-Linear Editing	
6.1	Project Menu	6-1
6.2	Active Clip Region	6-4
6.3	Zoom Edit Area	6-5
6.4	Scope/Control Area	6-9
7.	Off-Line Transitions	

- 8. Common Questions and Answers**
- 9. Troubleshooting Guide**

Chapter 1

The World of Digital Video

You are about to embark on a fascinating trip into the world of digital video. Your purchase of the **Digital Broadcaster™** video board and its accompanying **DMI 601™** editing software is your first step on a journey that will ease the burden of video production and allow your creative abilities to shine.

In the world of digital video, your analog footage is converted to digital data in a process called *digitization*. This digital information is then stored in some storage device such as a floppy disk, or a hard drive. Later, that information can be retrieved and converted back into analog video for display. This simple conversion opens up an entirely new world and presents endless new possibilities to speed video manipulation and add creative options to your video.

The primary advantage of digital video is that the digital data can be placed on a device which allows almost instantaneous access to any point within the video. Instead of long fast-forward or rewind delays, you can access any point in the video at will. Taking this concept further, you can access any point in the video during playback. This means that you can construct an edit decision list (EDL) that can access your original video and play back in real time. Your editing decisions become reality in seconds instead of hours because there is no need to re-record your video from an EDL.

Also, because the video is now present in a digital form available to a computer, you can process that data as you would any other digital data. This opens up creative possibilities that are limited only by your imagination and the speed of your computer. Some examples of these creative opportunities are:

- Rotoscoping
- Assemble computer rendered or hand drawn images into video
- Off line transitions and special effects.

You have made a wise choice to enter the world of digital video riding the wave that is the **Digital Broadcaster™**.

Chapter 2

Concepts

The **Digital Broadcaster™** is a fine example of recent developments in the rapidly growing field of digital video and its applications. This chapter is devoted to informing the user about the functionality of the **Digital Broadcaster™** and how its design leads to its numerous benefits.

2.1 *Brief Description: How the Digital Broadcaster™ Works*

The **Digital Broadcaster™** is similar in function to a video tape recorder (VTR). However, it records and plays back video to and from a disk drive, rather than a tape. Use of a disk drive allows features of which VTR designers and users can only dream.

2.1.1 RECORDING - DIGITIZING VIDEO

The **Digital Broadcaster™** accepts a composite, S-Video, component, or RGB analog video signal and converts it to digital video (a process known as *digitization*). This is necessary since the video is saved to a disk drive, which stores only digital data.

The CCIR 601 standard determines the method for converting the analog video input to digital data to ensure the video quality. Using this standard, each second of video data requires over 30 MB (MegaBytes) of digital storage. Unfortunately, storage devices that can transfer 30 MB of data per second are few, far between and extremely expensive. Obviously these devices are not practical in a real-world application.

Dilemma: Since no such devices exist, how can the **Digital Broadcaster™** claim to digitize video to a disk drive?

The answer. JPEG Compression

2.1.2 JPEG COMPRESSION

JPEG is a compression algorithm for still images. Named after the Joint Photographic Experts Group who developed the algorithm, JPEG encodes pixel information for a still image into a new data format (JPEG data) that takes up considerably less space. The **Digital Broadcaster™** uses JPEG for the following reasons:

1. Obviously, a slower data rate is required for video to be stored to disk. By compressing digitized video, say 10 times, with JPEG the 30 MB/sec rate becomes 3.0 MB/sec, a rate that many high-speed hard drives can handle.
2. The microchips used to do the JPEG compression on this product can do the compression in real-time. Other compression algorithms can compress data even further, but must be done off-line in non-real-time.
3. JPEG compresses still images so that each frame, even each field, of video can be uniquely defined by a set of JPEG data.
4. JPEG compression is user-definable. With the **Digital Broadcaster™**, the user can choose a compression ratio from 1/6th (6:1) to 1/80th (80:1) the original size of an image, varying the amount of data representing each frame.
5. The JPEG standard is widely accepted and used in many software packages, making your recordings compatible with droves of software.

The **Digital Broadcaster™** compresses the digitized input data and stores each compressed field of video sequentially to disk, along with reference information for each field. This allows for random access of each field during playback.

2.1.3 QUALITY SETTING CONSIDERATIONS

There is one very important caveat to JPEG that the user must bear in mind. The settings provided with the **Digital Broadcaster™** software allow user control of the QUALITY of the image. Once set, the quality will remain constant. However, the size of the compressed images ***WILL VARY*** from image to image and scene to scene. This means that the quality level can be relied upon, but not the compression or data rate. For this reason, no absolute correlation between compression ratios, data rates, and storage requirements for a given quality setting is given.

As an example, during one test, a scene of seals at play in the water was recorded at VHS quality. Near the end of the recording, the scene changed to

some birds in a

group of trees. The size of an extracted frame from the scene of the seals was about 70 KB for a compression ratio of about 14:1 (2.1 MB/sec). A frame extracted from the bird scene was over 125 KB for a compression ratio of 8:1 (3.8 MB/sec). The particular hard drive in use had a maximum transfer of 3.5 MB/sec. The result was a loss of frames in the second scene because the hard drive could not keep up with the data rate from the second scene.

Therefore, we highly recommend that the video to be recorded be previewed for the most detailed shots. Test that those scenes will record at the chosen quality on the hard drive in use. This will ensure that the entire reel of video footage will be successfully captured.

2.1.4 PLAYBACK - DECOMPRESSION

Having explained digitizing data and JPEG compression, playback is simple to explain: It is the reverse process of recording. During playback, the **Digital Broadcaster™** retrieves JPEG data from disk, decompresses the data into digitized pixel data which is converted to analog video.

2.2 Benefits of the Digital Broadcaster™

Storing high quality video frames to disk as separate entities in a widely-accepted standard will allow three substantial features to flourish, non-linear editing, playing animations without need for a single-frame VTR, and broadcast quality transmission from a disk drive.

2.2.1. NON-LINEAR EDITING

Any editor will verify that linear editing takes much time and effort. Most of that time is spent searching a video tape for the desired cut marks. With video stored to disk, access to any frame is almost instantaneous. This allows for non-linear editing, and shorter editing sessions.

2.2.2. PLAYING ANIMATIONS - NO SINGLE-FRAME VTR REQUIRED

Computer animators can attest to the importance of a single-frame VTR. Animations must be recorded to tape frame-by-frame, a very time-consuming process. The **Digital Broadcaster™** eliminates the need for the single-frame VTR. Animators can JPEG each frame of their animations with many available software packages and then concatenate their frames into a complete animation. This can then be played by the **Digital Broadcaster™** in real time.

2.2.3. BROADCAST QUALITY TRANSMISSION FROM A DISK DRIVE

Providing broadcast quality video from the hard disk is where Digital Micronics, Inc. has focused most of their energy in development of this product. The hardware and software have been optimized to allow for maximum data throughput, allowing JPEG compressions as low as 6:1, which is indistinguishable from the original. Even the most demanding professionals will be overwhelmed with the quality that can be output by the **Digital Broadcaster™**.

Chapter 3

Installation

Installation is a complicated process and should only be attempted by an authorized dealer or someone well acquainted with the Amiga platform.

3.1 *Digital Broadcaster™ Components*

- **Digital Broadcaster™** Expansion Card
- Breakout Box
- Shielded Ribbon Cable
- **DBC32™** Install Disk

3.2 *Hardware Requirements*

- Computer: Amiga 3000, Amiga 3000 Tower, or Amiga 4000
CPU: 68030 or 68040
RAM: 4 Megs Fast (8 Megs recommended)
HD & controller: See below
Super Buster Rev. 11 (for A4000 or using FASTLANE on A3000(T))
- Computer monitor compatible with the above Amiga computers
- Second monitor for viewing video capable of displaying PAL or NTSC video interlaced with composite, S-Video, component, and/or RGB input.

3.3 *Installation of Digital Broadcaster Hardware*

3.3.1 REMOVING THE COVER

3.3.1.1 Amiga 3000 Users

To remove the cover of the Amiga 3000, remove the 5 screws, 1 located at

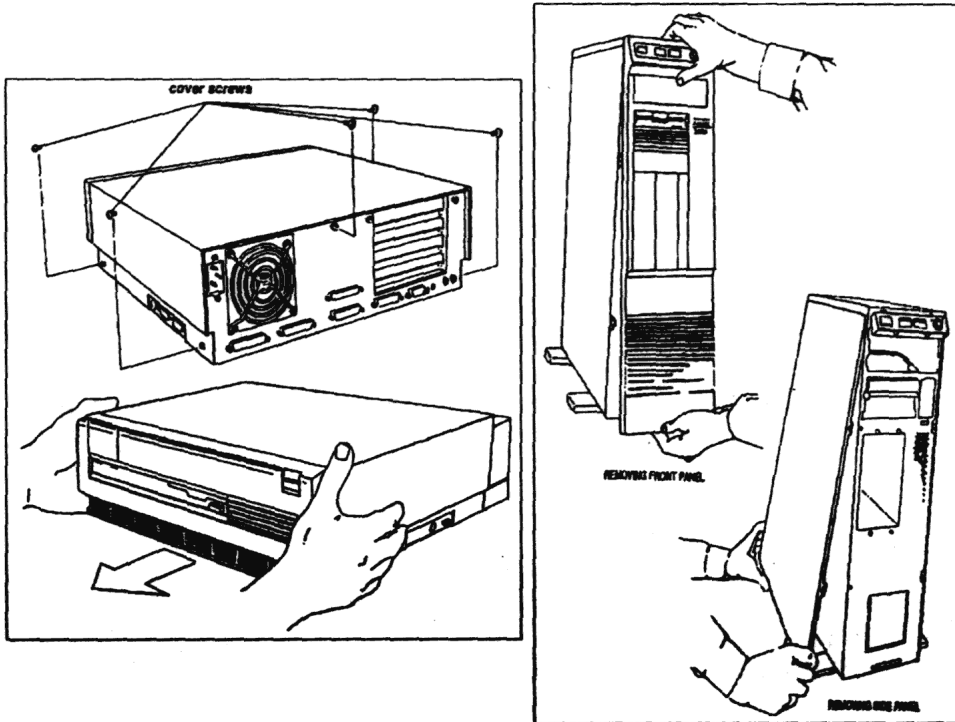


Figure 3.1 - A3000 and A3000T Disassembly

the center in the back and 2 on the lower part of both sides of the main unit (see Figure 3.1). With the computer facing forward, grasp the cover on both sides and slide it forward.

3.3.1.2 Amiga 3000T Users

To remove the cover of the Amiga 3000T (the side panel on the left), remove the front panel and then take out the two screws in the front and the two screws in the back that hold the side panel (see Figure 3.1). Firmly pull out the bottom of the left side panel and remove it.

3.3.1.3 Amiga 4000 Users

To remove the cover of the Amiga 4000, take out the two screws located in the upper, rear corners of the main unit. Grasp the cover on both sides and slide it backwards and up (see Figure 3.2).

3.3.2 INSTALLATION OF THE DIGITAL BROADCASTER

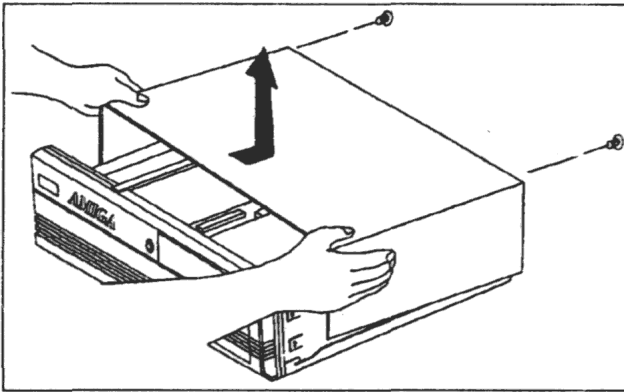


Figure 3.2 - A4000 Disassembly

The cover plates are located inside the main unit of the computer as shown in Figures 3.3 and 3.4. With a Phillips-head screw driver, remove the cover plate that corresponds to the slot in which the **Digital Broadcaster™** will be installed. Save the screw for use in installing the expansion card. Slide the **Digital Broadcaster™**

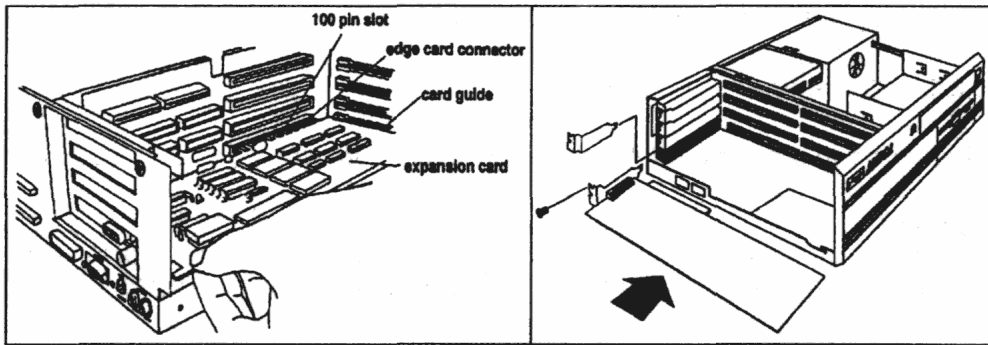
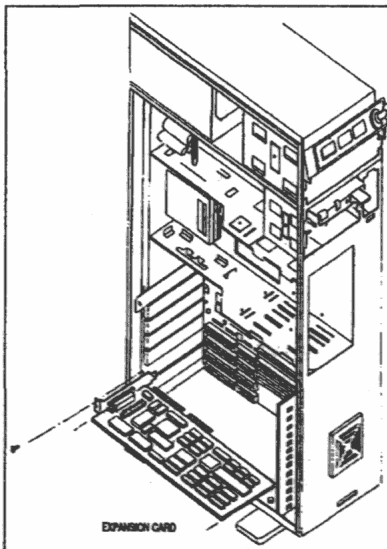


Figure 3.3 - A3000 and A4000 Expansion Card Installation



card into the slot chosen, allowing the track to guide the card. To insure complete contact between the expansion card and the main unit, push the card until its connector is completely embedded in the connector of the main unit. Refer to the computer's manual or the manual for any other expansion card installed in the system for more information on compatibility (*especially with regards to bridge boards*).

Figure 3.5 - A3000T Expansion Card Installation

3.3.3 CONNECTING DIGITAL BROADCASTER™ TO THE BREAKOUT BOX

To connect the **Digital Broadcaster™** card and the breakout box, attach one end of the shielded ribbon cable to the Digital **Broadcaster™** card connector located in the cover plate opening. Note that the cable has a single screw on each side of each connector which holds the cable to the screw inserts on the open connector of the **Digital Broadcaster™** card and breakout box. Align one end with the **Digital Broadcaster™** card, matching the screw with exposed threads with the smooth insert and vice-versa. Ensure that both screws are tightened simultaneously since screwing in one side at a time will result in a crooked alignment and an incomplete connection. Attach the other end of the ribbon cable to the breakout box connector in the same manner.

3.4 *Hard Drives and Controllers*

3.4.1 AMIGA 3000 AND AMIGA 3000T USERS

3.4.1.1 Controller

There are two options available for a hard disk controller

Option 1

The Amiga 3000 and Amiga 3000T are already equipped with usable, SCSI-1 controllers. The SCSI-1 controller is slower than a dedicated SCSI-II controller, but sufficient to run the **Digital Broadcaster™** at **S-VHS** or **VHS** quality. However, to ensure that the controller performs at the speeds necessary for this quality level, the A3000(T)'s synchronous transfer bit must be set. This bit is not normally accessible from AmigaDOS, so a utility has been included on the installation disk to allow toggling this bit on and off. The program called SCSSync is located in the Utils directory. This bit need only be set once, since it is stored in the battery backed-up memory of the A3000(T). However, **all drives on the SCSI bus must support synchronous transfers** or the bus will lock when data is transferred. If the current system drive is not a SCSI-II drive, it is a virtual certainty that it does not support this transfer mode and must be removed. Also, almost no CD-ROM drives, removable media or the like support this transfer mode and they must also be removed from the system.

For improved performance of the **Digital Broadcaster™**, a SCSI-II controller must be installed as described in Option 2.

Option 2

The FASTLANE SCSI-II controller by Advanced Systems & Software is the

controller recommended for optimum performance of the **Digital Broadcaster™**. This controller will be installed in addition to the SCSI-1 controller on the motherboard, allowing all the drives attached to the native SCSI-1 controller to remain. However, to utilize this controller, a Super Buster Revision 11 must be obtained and installed. Also, other parts of the computer may also need to be updated. Consult your dealer for more information.

NOTE: Do not install the Commodore A4091 controller. This controller is not compatible with the Digital Broadcaster™.

3.4.1.2 Hard Drive

Whether using the native SCSI-1 controller or a SCSI-II controller, at least one fast hard drive that supports synchronous transfers, is required for video. The drive should have a transfer rate of at least 3MB/second for satisfactory video performance with the **Digital Broadcaster™**. We recommend the Barracuda drive from Seagate Technology, Inc. The size of the drive will depend on both the quality at which the video will be processed and the amount of time storage desired (See Table 4-1 for more information on quality versus storage requirements). Multiple drives may be connected to one system to further increase on-line recording time (As of this writing, individual drives as large as nine Gigabytes have been announced allowing a potential of 63 Gigabytes of storage on a single controller! Drive array systems with even more storage are also available.). Also, multiple SCSI II hard drive controllers may be installed if slots are available. Consult your dealer for more information when installing more than one video drive or controller card.

Hard drive configuration differs, depending on whether the **Digital Broadcaster™** system will rely solely on the native SCSI-1 controller or use the SCSI-II controller.

SCSI-1 Users

If the **Digital Broadcaster™** system is going to rely solely on the native SCSI-1 controller, the A3000(T) synchronous transfer bit will need to be manually set. However, no stock hard drive on an A3000(T) supports synchronous transfers. Therefore this drive must be removed from the system. Before removing the system drive however, a portion of the fast video drive must be partitioned as a system partition or a separate system drive which supports this transfer mode must be purchased.

The following procedure lays out the method for configuring a hard drive for shared use by the system and the **Digital Broadcaster™**, assuming a stock hard drive configuration initially.

- Power down the computer.
- Install a new fast drive onto the system in accordance with the computer's manual.
- Ensure that the SCSI ID of this drive differs from all other drives on the bus. Refer to the hard drive manual to change the SCSI ID number. Note the SCSI ID of the new drive.
- Power up the computer.
- Use HDTToolBox (in the Tools drawer) to partition the drive into three partitions. Adjust the size of the first partition so that it is at least as large as the original system/boot disk (normally called "WB_2.x"), and ensure that it is not bootable. Rename this partition "NewSys". The second partition should be adjusted to be at least as large as the original "Work" partition. Name this partition "New". The last partition should encompass the remainder of the disk. Name this partition "Video".
- Exit HDTToolBox.
- Reboot if necessary for these new partitions to appear on the WorkBench Screen.
- Format these first two partitions with the FastFileSystem using the Quick option.
- Copy the contents of the old system/boot partition to the new system/boot partition on the fast drive and copy the contents of the old work partition to the "New" partition on the fast drive. Open a shell located in the System drawer. The command "copy SYS: NewSys: all" will copy the entire contents of SYS to NewSys *including all subdirectories*.
- Enter HDTToolBox again and rename the first partition of the fast drive "WB_2.x" (this name is only necessary for computers without WB 2.0 in ROM which display the message "Loading Kickstart 2.x" when powered up) and make it bootable. Rename the "New" partition "Work".
- Run SCSSync to turn on the synchronous bit (this will take effect on the next re-boot).
- Power down the computer.
- Remove the old drive from the system.
- Power up the system.
- Ensure that the system functions similarly to the way it did using the old drive. If not, contact your dealer or Digital Micronics for assistance immediately.
- Proceed with software installation procedures.

SCSI-II Users

We recommend the FASTLANE SCSI-II controller by Advanced Systems & Software. If using a SCSI-II controller, refer to the hard drive suggestion in section 3.4.1.2 above.

3.4.2 AMIGA 4000 USERS

3.4.2.1 Controller

The Amiga 4000's IDE controller is not fast enough to support **Digital Broadcaster™** use. Therefore, a SCSI-II controller must be purchased and installed to obtain quality video. No 32 bit (Zorro III) SCSI-I controller card is available for the Amiga, and no 16 bit (Zoro II) card will provide the speed necessary. We recommend the FASTLANE SCSI-II controller by Advanced Systems & Software.

NOTE: Do not install the Commodore A4091 controller. The A4091 is not compatible with the Digital Broadcaster™.

3.4.2.1 Hard Drive

At least one fast SCSI-II hard drive that supports synchronous transfers, is required for video. The drive should have a transfer rate of at least 3MB/second for satisfactory video performance with the **Digital Broadcaster™**. We recommend the Barracuda drive from Seagate Technology, Inc. The size of the drive will depend on both the quality at which the video will be processed and the amount of time storage desired (See Table 4-1 for more information on quality versus storage requirements). Multiple drives may be connected to one system to further increase on-line recording time (As of this writing, individual drives as large as 9 Gigabytes have been announced allowing a potential of 63 Gigabytes of storage on a single controller! Drive array systems with even more storage are also available.). Also, multiple hard drive controllers may be installed if slots are available. Consult your dealer when installing more than one video drive or controller.

3.4.3 Testing the Hard Drive

To ensure that the performance of your hard drive matches speeds indicated by the hard drive manufacturer, and is therefore suitable for **Digital Broadcaster™** use, run the SpeedTest program in the Utils drawer. ***Before testing, installation must be accomplished as described in the software installation, section 3.5.*** If the results from this program indicates that there is a discrepancy, refer to Troubleshooting Chapter 9.

3.4.4 Breakout Box Connectors

The breakout box serves all the input and output needs of the **Digital Broadcaster's** video. Figure 3.1 is a diagram of the breakout box and its connections.

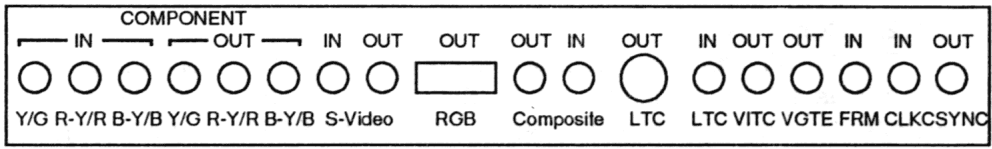


Figure 3.1 - Breakout Box

S-Video in and out are standard S-Video connectors.

RGB out is a mini-DB15 connector.

LTC in is a XLR connector.

All other connectors are standard female BNC.

3.4.4.1 Component In

- Provides input for Betacam component (Y, R-Y, B-Y) or RGB
- Reads Vertical Interval Time Code (VITC) input

3.4.4.2 Component Out

- Provides output of Betacam component (Y, R-Y, B-Y) or RGB
- Provides timecode burn-in window
- Provides VITC out

3.4.4.3 S-Video In

- Provides Y/C input
- Reads VITC input

3.4.4.4 S-Video Out

- Provides Y/C output
- Provides timecode burn-in window
- Provides VITC out

3.4.4.5 RGB Out

- Provides RGB out

3.4.4.6 Composite Out

- Provides composite output
- Provides timecode burn-in window
- Provides VITC out

3.4.4.7 Composite In

- Provides composite input
- Reads VITC input

3.4.4.8 LTC (Longitudinal Time Code) In

- Reads LTC input

3.4.4.9 LTC Out

- Provides LTC output

3.4.4.10 VITC (Vertical Interface Time Code) Out

- Provides VITC output

3.4.4.11 VGTE (VITC Gate) Out

- Provides VITC Gate output

3.4.4.12 FRM (Frame) In

- Reads color frame input

3.4.4.13 CLK (Click) In

- Reads LTC synchronization input

3.4.4.14 CSYNC (Composite Sync) Out

- Provides horizontal and vertical composite sync

3.5 *Software Installation*

3.5.1 System Requirements

- AmigaDOS 2.1 or greater

3.5.1.1 Installation with the FASTLANE SCSI II Controller

After installing the FASTLANE SCSI II Controller and a fast SCSI II hard drive, as described in the FASTLANE users manual, place the FASTLANE Z3

disk in the floppy disk drive. Double-click on the FASTLANE icon to open it. Click on the icon that says SCSIConfig, a message may appear as below:

```
The Device Geometry.Totalsectors [sic] is 0 for Unit <some number>
Reloaded:
TotalSectors = <some number>
```

Click Ok. A menu appears with SCSI drives on the left and SCSI controllers on the right. Under SCSI Drives should appear "Unit # Lun # drive manufacture ID #". Make a note of the unit number of the drive you have installed. Click on the partition button. A new menu should appear that says "Partition List" on the left. Under "Partition List" there should only be one partition listed. This is the default partition generated by the software. Double-click on the partition to bring up the partition configuration window. Change the name to "Video" and **make sure to press the enter key** after typing the new name. Also, make sure the mask says Oxffffffc, boot is **NOT** checked and mount is checked. Now, click Ok and the previous menu will reappear, click Ok again. The main menu now appears, click "Save Changes". A message will appear asking if you wish to save the changes, click on Ok. A second message appears verifying your choice, click Ok. Click "Quit". A message appears asking if you wish to reboot the computer. Remove the FASTLANE Z3 disk from the computer and click Ok. The computer will reboot and an icon will appear for the new drive with strange characters written below it.

Now, insert the **DBC32™** disk into the floppy drive. Click on its icon, then click on the DBC32Install icon. The install routine will lead you through the install procedure.

After you have completed the **DBC32™** installation, open a shell and run ConfigDisk, which is in the Utils directory. A selection menu will appear with "Amiga Partition" selected, click Okay. A new menu appears with "Hard Disks" at the top. There will be several names written below "Hard Disks", click on the one that has the unit number you noted earlier (if there are two entries with the same number, choose the one that **does not read** st3144AT). The partition name, "Video," should appear under the "Partitions" menu, click on it. Then click on the button that says "Configure an Amiga Partition as MS-DOS", a warning message will appear, click Okay. A second warning will appear, click Okay again. A requester now appears asking you to name the new partition. Type "DB" and press return. The program will append "C:" to the DB naming the device "DBC:".

Re-insert the FASTLANE Z3 disk and click on its icon. Then click on the SCSIConfig icon. The menu should appear as before with your hard drive listed under "SCSI Drives". Click on "Partition", then double click on the partition name to bring up the partition configuration menu. Remove the check mark next to mount by clicking on it. Click Ok, and then click Ok when the previous menu appears. Save Changes and click Ok for the two warning messages that appear. Quit the program, remove the FASTLANE Z3 floppy, and click Ok for

the warning message. The computer will reboot.

From the shell type "FDisk DBC:" You should receive a message saying "Partitioning successful!". Now type "format Drive DBC: name DBC noicons quick" and press return. A prompt will appear saying

Insert disk to be formatted in device DBC,

Press RETURN to begin formatting or CTRL-C to abort;

Press return. An icon will now appear with DBC: below it and CROSS DOS™ written on it.

The software installation is now complete.

3.5.1.2 Installation Using the A3000(T) Native SCSI Controller

After you have installed the synchronous SCSI II drive as described in section 3.4.1, place the DBC32™ floppy in the disk drive, click on it's icon then click on the DBC32Install icon. The install routine will lead you through the install procedure.

Once the **DBC32™** installation is complete, open a shell and run ConfigDisk, which is in the Utils directory. A selection menu will appear with "Amiga Partition" selected, click Okay. A new menu appears with "Hard Disks" at the top. Under "Hard Disks" will be the drive with the SCSI ID you noted earlier. Click on it. The three partitions you created in HDToolBox will appear below "Partitions". Click on the "Video" Partition. Now click on the button that says "Configure on Amiga Partition as MS-DOS". A warning message will appear, click Okay, and a second warning message will appear, click Okay. A requester will then appear asking to name the new partition. Type "DB" and press return. The program will append C: to the DB naming the device DBC:. From the shell type "FDisk". You should receive a message saying "Partitioning successful!". Now type "format Drive DBC: name DBC noicons quick" and press return. A prompt will appear saying

Insert disk to be formatted in device DBC

Press RETURN to begin formatting or CTRL-C to abort:

Press return. An icon will now appear with DBC: below it and CROSS DOS™ written on it.

The software installation is now complete.

Chapter 4

Recording

The record program allows capturing video either in real-time, or a frame at a time and creates an appropriate JStream (JPEG stream) reel file. It also creates an appropriate clip file as a reference to the reel for use in the **DMI 601™** editing software. The interface is depicted in Figure 4.1.

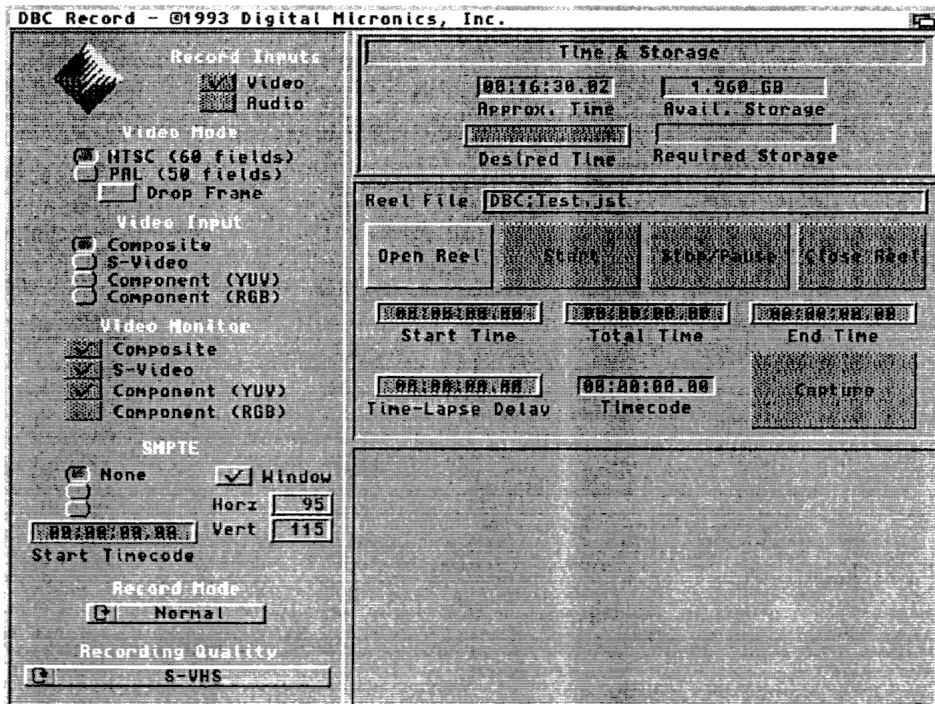


Figure 4.1 - DBCRecord Interface

Begin by double-clicking the **DBCRecord** icon. A blank screen will appear on the computer screen while the **Digital Broadcaster™** is initializing. Once

initialized, the recording control screen will appear. The screen is subdivided into four sections by function (**Settings, Time & Storage, Control and Audio**):

4.1 SETTINGS

The **Settings** section allows configuration of the hardware and software to a particular application and is depicted in Figure 4.2.

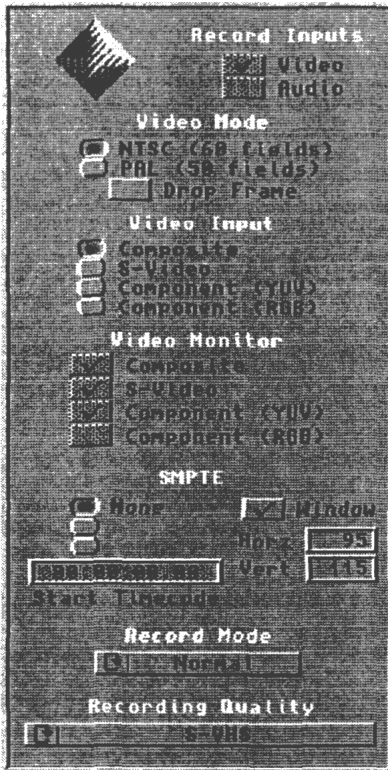


Figure 4.2 - Settings

NOTE: The timecode burn-in window can only be present during record on the output that corresponds to the chosen input.

4.1.1 RECORD INPUTS

Record Inputs allows toggling the **Video** and **Audio** inputs on or off for record. Note that the **Audio** selection is only available when a compatible audio card with its accompanying software is installed on the system.

4.1.2 VIDEO MODE

Video Mode allows a choice of video standards for input. This setting must match the video standard being utilized to ensure the video is properly captured. The **Drop Frame** option (available only when **NTSC** is selected) selects whether the timecode will count at a rate of 29.97 fps (**Drop Frame**) or 30 fps (**non-DropFrame**).

4.1.3 VIDEO INPUT

Video Input allows a choice of video inputs. Note that sources may be connected to all inputs simultaneously and that this setting chooses which source will be captured.

4.1.4 VIDEOMONITOR

Video Monitor indicates which video outputs are available for a chosen input. This is hardware dependent.

4.1.5 SMPTE

The **SMPTE** section allows control of the timecode capturing and display. Timecode can be ignored entirely during record (**None**), captured from the incoming video (**Read**), or striped on the way in with a new timecode (**Stripe**). In the latter case, the **Start Timecode** field allows entry of the timecode from which to begin striping.

The **Window** checkbox allows toggling on and off of the timecode burn-in window.

The **Horz** and **Vert** fields allow positioning of the window on the video screen.

Table 4.1 - Quality Information

Quality Level	Approx. Compression	Approx. Storage per Gigabyte	Approx. Data Transfer Rate
Blocks	80:1	45:30.00	380 KB/sec
Rough	70:1	39:00.00	435 KB/sec
Off-Line	55:1	32:30.00	525 KB/sec
MPEG	40:1	22:45.00	750 KB/sec
3rd Generation VHS	30:1	16:15.00	1.00MB/sec
2nd Generation VHS	25:1	12:20.00	1.35MB/sec
VHS	20:1	09:45.00	1.75MB/sec
S-VHS	15:1	08:25.00	2.00MB/sec
Betacam SP	12:1	06:30.00	2.65 MB/sec
Broadcast	10:1	05:10.00	3.30 MB/sec
Master 1	8:1	04:30.00	3.80 MB/sec
Master 2	7:1	03:50.00	4.50 MB/sec
Master 3	6:1	03:10.00	5.40 MB/sec

NOTE WELL: The numbers above are only rough approximations based on average video footage. *The footage itself* will be a major factor in determining the compression ratio and thus the data rate. This will in turn determine the highest quality a particular system can record.

4.1.6 RECORD MODE

Record Mode allows a choice of four modes. These determine the behavior of the gadgets in the **Control** section.

- **Normal** - After opening a file, pressing **Start** begins recording. When **Stop/Pause** is pressed, recording stops.

- Delayed - After opening a file, pressing **Start** causes **Start Timecode** to begin counting down. When it reaches 00:00:00.00, recording begins. Recording proceeds for **Total Time** until **End Timecode** is reached. Recording may also be interrupted by pressing **Stop/Pause** at any time.
- **Stop-Motion** - After opening a file, pressing **Capture** captures a single frame of video.
- Time-Lapse - After opening a file, pressing **Start** causes **Start Timecode** to begin counting down. When the time reaches 00:00:00.00, a single frame is captured and the **Time-Lapse Delay** begins counting down. When it reaches 00:00:00.00, a single frame is captured and the counter is reset to its initial value to begin counting down again. Recording proceeds for **Total Time** until **End Timecode** is reached. Recording may also be interrupted by pressing **Stop/Pause** at any time.

4.1.7 RECORDING QUALITY

Recording Quality allows setting the level of compression of the recorded video. There is a trade-off between the image quality and the compression which is reflected in the subjective quality settings of the control.

Table 4.1 gives an approximation of the data rate and recording time for each level of quality.

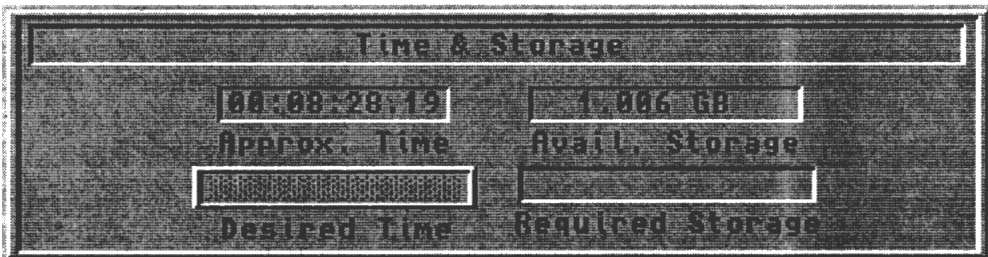


Figure 4.3 - Time & Storage

4.2 TIME & STORAGE

The **Time & Storage** section, depicted in Figure 4.3, displays the storage available, an approximation of the amount of time that storage will hold at the chosen quality setting, and allows the user to determine approximate storage requirements for a specific desired time.

4.2.1 APPROX. TIME

The **Approx. Time** window displays the approximate time available at the current quality setting given the **Avail. Storage**. *This time can also be affected by RAM limitations.*

4.2.2 AVAIL. STORAGE

The **Avail Storage** window displays the video storage available in bytes, kilobytes, megabytes, or gigabytes as appropriate.

4.2.3 DESIRED TIME

The **Desired Time** field allows the user to enter a timecode formatted time which is evaluated to determine the **Required Storage** at the given **Quality** setting (see section **4.1 Settings**).

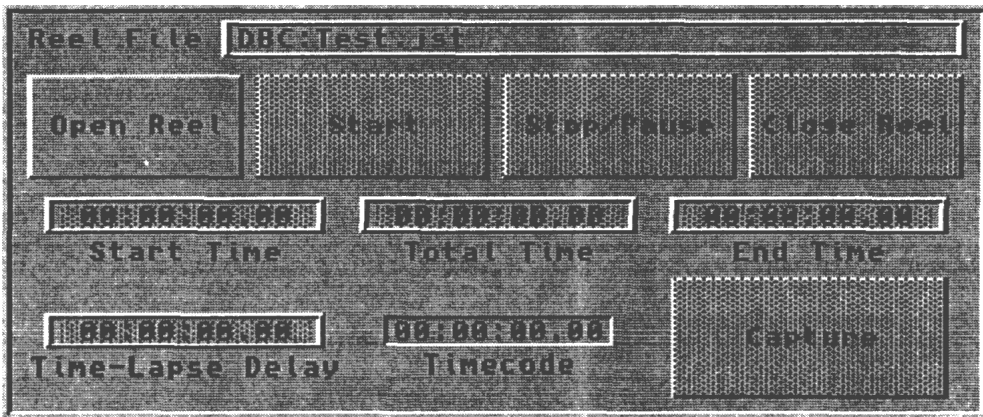


Figure 4.4 - Control

4.2.4 REQUIRED STORAGE

The **Required Storage** window displays the storage required for the time entered into the **Desired Time** field.

4.3 CONTROL

The **Control** section, illustrated in Figure 4.4, contains all controls for the actual recording process.

4.3.1 REEL FILE

The **Reel File** field allows naming of the reel file to be recorded. It is recommended that these files have the extension “.jst” appended to them to distinguish them as **Digital Broadcaster™** JStream files.

4.3.2 OPEN REEL

Open Reel opens and initializes the JStream reel file. This must be done prior to recording any information.

4.3.3 START

The **Start** button initiates recording depending on the **Record Mode** selected in the **Settings** section. Refer to **Settings** for more information.

4.3.4 STOP/PAUSE

The Stop/Pause button terminates a recording session. Multiple segments may be recorded by alternately pressing **Start** and **Stop/Pause**.

4.3.5 CLOSE REEL

Close Reel finishes writing reference information to the JStream reel file and closes the file. It also creates a clip file referencing the entire reel for use in the **DMI 601™** editing software.

4.3.6 START TIME

The **Start Time** field allows entering a relative time to begin recording in **Delayed** and **Time-Lapse** modes of recording. When **Start** is pressed, this field begins counting down and when 00:00:00.00 is reached, recording begins.

4.3.7 TOTAL TIME

The **Total Time** field allows input of a recording duration. When changed by the user, **End Time** is updated to reflect the new ending time.

4.3.8 END TIME

The **End Time** field allows entry of a relative end time for the recording process. When a new **End Time** is entered, the **Total Time** field is updated to indicate the new duration of recording.

4.3.9 TIME-LAPSE DELAY

Time-Lapse Delay allows user input of the delay between frame captures during **Time-Lapse** recording. Refer to the **Settings** section for more information.

4.3.10 TIMECODE

The Timecode window shows the timecode of the next frame to be captured.

4.3.11 CAPTURE

The **Capture** button allows the user to capture a single frame when recording in the **Stop-Motion** mode.

4.4 AUDIO

The **Audio** section is not yet implemented due to technical difficulties in interfacing the audio board. Registered customers will be advised as soon as the interfacing has been completed. Please contact Digital Micronics for more up-to-date information.

Chapter 5

*EDImation*TM

EDImationTM is the process of taking still images and creating a JStream reel file for playback and then editing the resulting animation into a video production. The images can come from a 3-D rendering program or a 2-D paint or drawing program. This process eliminates the need for a 24-bit display device, single-frame controller, and single-frame recorder.

Automated programs are being developed to accelerate and simplify this process. However, rather than delay the release of this exciting piece of hardware, we are providing a bit less elegant method of performing this process.

At present, we rely on **ADPro 2.x** from **ASDG**. This highly flexible program provides the basics necessary to process frames into an animation. To proceed, this program must be obtained and installed.

In the Utils drawer is an AREXX script tailored for this process. It will be necessary to edit this script for the particular animation being composed.

The frames being composited must be pre-rendered and present in a directory on the hard drive. The script necessary is called "Frames2JStream.adpro." This script must be loaded into a text editor such as MEmacs or Ed included in the operating system.

To customize this file for a particular application, the following lines must be changed:

Line 110 - Place the full path of your source frames here.

Lines 114-118 - Uncomment the appropriate standard settings by removing the /* before and */ after the width and height. Comment the set not being used by placing /* before and */ after these entries.

Line 122 - Place the full path of your destination JStream here.

Line 125 - Place the number of the first frame in the sequence here.

Line 129 - Place the number of the last frame in the sequence here.

Line 134 - Place the number of digits used in the filenames of the frames.

For example: If the frames are named "frame.0001" through "frame.3548," this number would be 4 to indicate the four digits of the

frame number. If the frames have no leading zeros (i.e. "frame.1" through "frame.3548"), this number should be set to 0.

Line 137 - Place the full path to the AppendJPEG utility here. If the standard installation is used, this line need not be changed.

Then ADPro must be running for the script to execute. By opening a shell and typing "RX Work:DBC/Utils/Frames2JStream.adpro" the processing will begin. When the script finishes, you can load and play the animation as you would any other clip from the **DMI 601™** software.

Chapter 6

Non-Linear Editing

The most exciting prospect of digital video is that of a non-linear editing environment. In conventional linear editing systems, tapes must be shuttled back and forth to obtain timecode information and then re-recorded to assemble a video production. This entire process is supplanted by the **Digital Broadcaster™** and its on-line non-linear editing.

Begin by double-clicking on the **DMI 601™** icon to run the editing software. The **Digital Broadcaster™** will be initialized and then the interface screen will appear.

The screen is divided into three working areas: the **Active Clip** region, the **Zoom Edit** area, and the **Scope/Control** area. Figure 6.1 depicts the interface.

6.1 Project Menu

6.1.1 NEW

New clears all editing lines and readies the editing environment for a new editing session.

6.1.2 OPEN...

Open... allows loading an edit session file. This file includes information for all video and audio clip editing lines, and the EDL line. The placement of the Timeline Position Indicator (TPI) determines the position at which this information is loaded. Operation when the TPI is placed over clips already on the line is dependent on whether operating in LOCKED or UNLOCKED mode. In LOCKED mode, the clips are split to make room for the inserted session. In UNLOCKED mode, the clips are moved left or right as if a clip was inserted individually.

6.1.2 SAVE

The **Save** entry saves the edit session to the hard drive using the name of

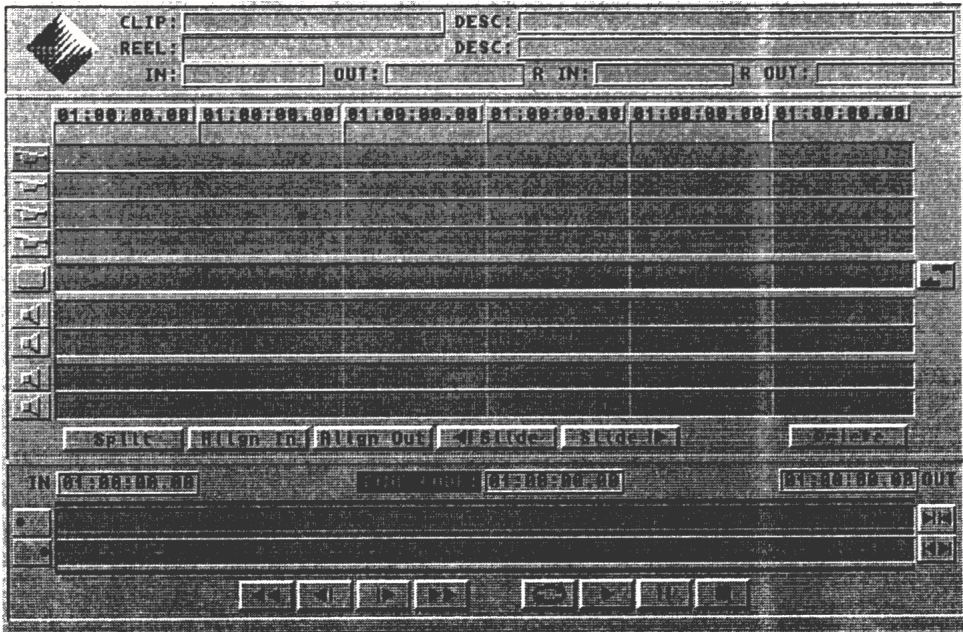


Figure 6.1 - DMI 601™ Interface

the last loaded or saved tile. If no name has been defined, **Save** defaults to **Save As...** operation.

6.1.3 SAVE AS...

Save As... requests user entry of a name to save the edit session to disk.

6.1.4 PREFERENCES...

Preferences... brings up the Preferences requester which allows configuration of the editing environment. Figure 6.2 shows the Preferences configuration window.

6.1.4.1 Output Mode

Output Mode allows a choice the active video output. Composite and S-Video output formats are always present. Component (YUV) and Component (RGB) are mutually exclusive due to hardware considerations.

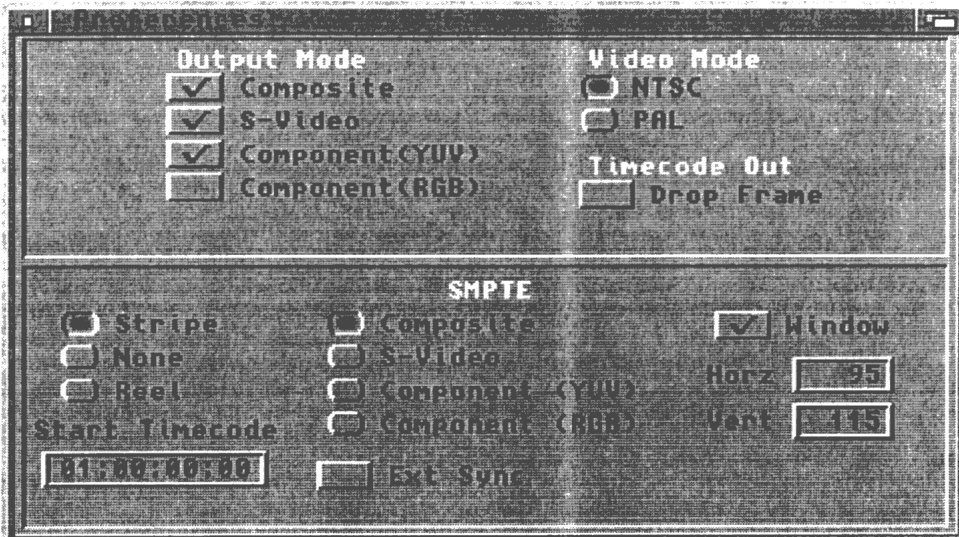


Figure 6.2 - Preferences

6.1.4.2 Video Mode

Video Mode allows setting the video standard. Ensure that the output devices are compatible with the selection here.

6.1.4.3 Timecode Out

Timecode Out allows toggling on and off **Drop Frame** mode when outputting timecode.

6.1.4.4 SMPTE

The **SMPTE** section allows control of the SMPTE timecode output. The timecode output may be added at playback time (**Stripe**), Output from the reel file (Reel) or not output at all (None). In **Stripe** mode, the **Start Timecode** field indicates the time at which the striping timecode begins. This time corresponds with the **IN** timecode in the **Scope/Control** section of the main editing screen.

The VITC timecode and burn-in window can be placed on any of the available outputs. The center section allows this choice.

The **Ext Sync** toggles synchronization to an external sync for interfacing the **Digital Broadcaster™** into an editing environment.

The **Window** checkbox toggles on and off the burn-in window.

The **Horz** and **Vert** fields allow placement of the window on the video

screen.

6.1.5 QUIT

Quit exits the **DMI 601™** software.

6.2 Active Clip Region

The **Active Clip** region shown in Figure 6.3, displays information about the currently active clip. The name of the active clip is highlighted in white in the Zoom Edit area if it is visible.



Figure 6.3 - Active Clip Region

6.2.1 CLIP

The **Clip** field shows the name of the currently active clip. This clip can be renamed at any time by activating this field and changing the name. For easy identification, it is recommended that all clips have the “.clip” extension. The DBCRecord program follows this convention when it creates clips for reel files recorded.

6.2.2 CLIP DESC

The **Desc** field immediately to the right of the **Clip** field allows viewing, entry, and editing of a description of the clip file. This description is limited to 256 characters, however only about 40 characters can be displayed without scrolling this field.

6.2.3 REEL

The **Reel** window shows the path and filename of the reel file referenced by the currently active clip. This name cannot be changed from within **DMI 601™** since it would render all other clips referencing this reel useless.

6.2.4 REEL DESC

The **Desc** field immediately to the right of the **Reel** field allows viewing, entry, and editing of a description of the reel file. This description is limited to 256 characters, however only about 40 characters can be displayed without scrolling this field.

6.2.5 CLIP IN

The **In** field below the **Reel** field shows the in time of the currently active clip on the editing timeline. When in LOCKED mode, adjusting this time trims the in time, leaving the out time alone. This will shorten or lengthen the clip. The clip cannot be extended beyond its starting point. In UNLOCKED mode, adjusting this time slides the clip forward or backwards, maintaining its length and location within the reel file.

6.2.5 CLIP OUT

The **Out** field below the **Reel** field shows the in time of the currently active clip on the editing timeline. When in LOCKED mode, adjusting this time trims the out time, leaving the in time alone. This will shorten or lengthen the clip. The clip cannot be extended beyond its ending point. In UNLOCKED mode, adjusting this time slides the clip forward or backwards, maintaining its length and location within the reel file.

6.2.6 REEL IN

The **R In** field shows the in time of the currently active clip on its source reel. When in LOCKED mode, adjusting this value trims the in time, leaves the out time alone, and thus adjusts the length of the clip. In UNLOCKED mode, adjusting this time slides the out time as well so that the clip does not change in duration, while the timeline location of the clip is not altered. The in time cannot be moved beyond the starting point of the source clip.

6.2.7 REEL OUT

The **R Out** field shows the out time of the currently active clip in its source reel. When in LOCKED mode, adjusting this value trims the out time, leaves the in time alone, and thus adjusts the length of the clip. In UNLOCKED mode, adjusting this time slides the in time as well so that the clip does not change in duration, while the timeline location of the clip is not altered. The out time cannot be moved beyond the ending point of the source clip.

6.3 *Zoom Edit Area*

The **Zoom Edit** area, shown in Figure 6.4 allows to-the-frame editing of video productions. This area can encompass from a single frame to the entire video timeline (scope). The area also has video working areas, and allows loading and moving of clips.

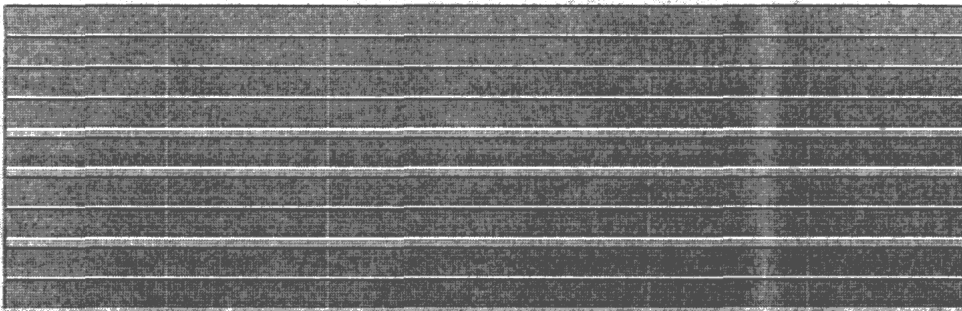


Figure 6.4 - Zoom Edit Area with TPI (far left)

6.3.1 TIMECODE LABELS

The row of timecodes above the editing area shown in Figure 6.5 label the vertical **Timecode Markers** to show timecodes within the window. Note that each label has a connection to a timecode marker. The **Timecode Label** contains the timecode at that marker. These timecodes are automatically updated whenever the **Zoom Edit** area is changed.



Figure 6.5 - Timecode Labels

6.3.2 CLIP LOADING BUTTONS



The vertical row of buttons to the left of the editing region shown in Figure 6.6 allows loading of clips. Clicking on one of these buttons brings up a requester to load a clip. Initially this requester contains a filter to show only files ending in ".clip" For this reason it is recommended that all clips end with this extension. The clips are loaded at the current position of the TPI on the line beside the chosen

Figure 6.6 - Clip Load Buttons

clip load button. In LOCKED mode the TPI will be left at the beginning of the clip after loading. Also, if a clip is split by the TPI on the chosen clip line, it will be split into two clips and the new clip will be placed between the split pair. A new name will be requested for the newly created second half of the original clip. In UNLOCKED mode, the TPI will be moved to the end of the clip after loading. Also, if a clip is split by the TPI on the chosen clip line, the clip will be moved left

or right to make room for the new clip depending on the location of the TPI in relation to the original clip.

6.3.3 TIMECODE MARKERS

The vertical marks in the **Zoom Edit** area are **Timecode Markers**. These delineate timecodes along the **Zoom Edit** area. The timecode they represent is indicated by the adjoining timecode label above.

6.3.4 TIMECODE POSITION INDICATOR (TPI)

The vertical red line in the **Zoom Edit** area (and the **Scope/Control** area) is the TPI. This marker, along with the highlighted currently active clip, indicates the current frame being displayed on the video monitor. The TPI can be moved anywhere in the **Zoom Edit** area by clicking with the mouse. This will update the current TIME CODE display. During play, the TPI in the **Zoom Edit** area will be blanked and it will return when the video playback has stopped.

6.3.5 CLIP EDIT LINES

The four upper lines of the **Zoom Edit** area are the video **Clip Edit Lines**. It is into this region that clips are loaded and manipulated before being placed onto the **EDL Line**. Once a clip is placed on this line, clicking anywhere on that clip will make it the active clip, update the TPI and update the TIME CODE display. Also, the frame corresponding to the position clicked on within the clip will be displayed on the video output monitor. A particular clip can only be loaded once. This is because the information altered when editing each clip is immediately stored into the file. In the event of a power outage or system problem, the edits in progress are saved in their respective clips. In UNLOCKED mode, the clips can be moved and placed at will. Dropping a clip onto another clip will move the original clip forward or back depending on the position of the dropped clip. Clips in the **Clip Edit Lines** can be moved from one line to another as desired. In LOCKED mode, clips cannot be moved along the timeline. Moving the clips from line to line can be done, but all clips maintain their original timeline in and out times. A clip cannot be deleted from the **Clip Edit Lines** when it is still linked to an EDL entry.

6.3.6 EDL LINE

The center line (horizontal) is the **EDL Line**. Clips placed on this line become EDL entries and can be played. EDL entries can also be edited while on the EDL Line. However, these changes are only saved when a **Save** or **Save As...** item is selected in the **Project Menu**.

6.3.7 AUDIO LINES

The **Audio** lines are not functional in version 0.9 of the DMI 601™ editing software. Contact your dealer or DMI for information concerning upgrades.

6.3.8 LOCK/UNLOCK CONTROL

The **Lock/Unlock** control depicted in Figure 6.7, allows toggling between LOCKED and UNLOCKED modes of operation. In UNLOCKED mode, the clips can be moved to any location along the editing lines. In LOCKED mode, clips are not allowed to move forward or backwards along the timeline to ensure maintained synchronization. This control also affects many other controls and the way in which they perform their functions to be consistent with the chosen mode. See the individual controls for more information.



Figure 6.7 - Locked/Unlocked Control

6.3.9 SPLIT

The **Split** button allows the currently active clip to be split at the location of the TPI. The user is queried for a name for the newly created clip, which is the portion of the original clip to the right of the TPI position.

6.3.10 ALIGN IN

The **Align In** button causes all selected clips to have their in times aligned to the first clip selected. This selection can only be applied to clips on unique clip edit lines. This operation is not valid in LOCKED mode.

6.3.11 ALIGN OUT

The **Align Out** button causes all selected clips to have their out times aligned to the first clip selected. This selection can only be applied to clips on unique clip edit lines. This operation is not valid in LOCKED mode.

6.3.12 SLIDE LEFT

The **Slide Left** button moves the chosen clip one frame to the left to allow accurate placement of a clip relative to another.

6.3.13 SLIDE RIGHT

The **Slide Right** button moves the chosen clip one frame to the right to allow accurate placement of a clip relative to another.

6.3.14 DELETE

The **Delete** button allows a clip or an EDL entry to be deleted from the timeline. A clip cannot be deleted if an EDL entry which references it is in use.

6.4 Scope/Control Area

The **Scope/Control** area in Figure 6.8, allows overall control of the editing timeline. It also allows placement of the TPI and some Zoom Edit area controls.

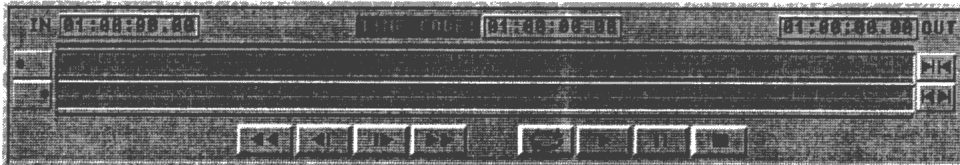


Figure 6.8 - Scope/Control Area with TPI (far left)

6.4.1 TIMELINE IN

The **In** field shows the current timeline in timecode. Altering this alters all other timecodes to reflect the new timeline configuration. All clips are left in their relative position.

6.4.2 TIMECODE

The **Timecode** field shows the current position of the TPI. This, along with the highlighted active clip, indicates the frame being displayed on the video monitor.

6.4.3 TIMELINE OUT

The **Out** field shows the current timeline out timecode. Altering this alters all other timecodes to reflect the new timeline configuration. All clips are left in their relative position.

6.4.4 GO TO START

The **Go To Start** button moves the TPI to the start of the Scope timeline.



Figure 6.9 - Go To Start

6.4.5 GO TO END

The Go To **End** button moves the TPI to the end of the Scope timeline



Figure 6.10 - Go To End

6.4.6 ZOOM IN

The **Zoom In** button allows the bracketed area of the scope to be zoomed in on. The **Zoom Edit** area changes to reflect the new area on the scope.



Figure 6.11 - Zoom In

6.4.7 ZOOM OUT

The **Zoom Out** button allows the bracketed area of the scope to be zoomed out. The **Zoom Edit** area changes to reflect the zoomed out area on the scope.



Figure 6.12 - Zoom Out

6.4.8 SCOPE AREA

NOTE: The color of the clips on the scope are coordinated to match the clips in the **Zoom Edit** area for easy visual reference.

6.4.8.1 Timecode Position Indicator (TPI)

This marker indicates the current frame being displayed on the video monitor. The TPI can be moved anywhere in the **Scope Area** by clicking with the mouse. This will update the current **TIME CODE** display. It will also update the TPI in the **Zoom Edit** area and will update the **Zoom Edit** area centered around the Zoom TPI.

6.4.8.2 DRAG REGION

By clicking and holding down the left mouse button in the **Scope Area**, the zoom region can be manually adjusted by moving the mouse. While holding the button, the zoom region is highlighted in white. Once the desired zoom region has been chosen, the left mouse button is released.

6.4.8.3 ZOOM BRACKET

The **Scope Area** represents the entire clip/EDL line. The **Zoom Brackets** indicate the zoom region which defines the Zoom Edit Area. The brackets are above and below the Scope Area.

6.4.9 REWIND

The **Rewind** button displays a frame 25 frames previous to the one currently being displayed. Holding down this button will cause frames to be displayed rapidly in reverse order, 25 frames apart. It can be used for active clips on the clip line or on the EDL line.



Figure 6.13 - Rewind Button

6.4.10 STEP BACK

The **Step Back** button displays one frame previous to the one currently being displayed. Holding down this button will cause frames to be displayed rapidly in reverse order, frame-by-frame. It can be used for active clips on the clip line or on the EDL line.

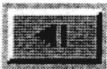


Figure 6.14 - Step Back Button

6.4.11 STEP FORWARD

The **Step Forward** button displays one frame ahead of the one currently being displayed. Holding down this button will cause frames to be displayed rapidly in forward motion, frame-by-frame. It can be used for active clips on the clip line or on the EDL line.



Figure 6.15 - Step Forward Button

6.4.12 FAST FORWARD

The **Fast Forward** button displays a frame 25 frames ahead of the one currently being displayed. Holding down this button will cause frames to be displayed rapidly in forward motion, 25 frames apart. It can be used for active clips on the clip line or on the EDL line.

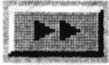


Figure 6.16 - Fast Forward Button

6.4.13 PLAY LOOP

The **Play Loop** button begins playing the EDL that is shown within the brackets in a constant loop until the **Stop** button is pressed.



Figure 6.17 - Play Loop Button

6.4.14 PLAY

The **Play button** begins playing the EDL at the TPI and continues playing until the end of the EDL or until **Stop** is pressed.



Figure 6.18 - Play Button

6.4.15 PAUSE

The Pause button temporarily pauses playback and shows the current frame repeatedly. Playback can resume when **Play** or **Play Loop** is pressed.



Figure 6.19 - Pause Button

6.4.16 STOP

The **Stop** button terminates playback and displays the current frame.



Figure 6.20 - Stop Button

Chapter 7

Off-Line Transitions

Currently, automated programs are being developed by Digital Micronics to accelerate the creation of off line transitions. However, for those that are familiar with AREXX scripts and **ADPro 2.x** from **ASDG**, the routines AppendJPEG and ExtractJPEG have been provided for use with **ADPro 2.x**. Please refer to the chapter on **EDImation™**.

Chapter 8

Common Questions & Answers

This chapter attempts to save you a phone call to Digital Micronics, Inc. by answering what are perceived to be the most persistent questions about this product.

- Q. What is the *pink* video effect (all video looks pink) seen when monitoring recording on the RGB monitor?**
- A.** This is a result of a hardware limitation. It is caused by an incompatibility of the digital video format with certain video chips that convert the digital data into the analog video outputs.

The Digital Broadcaster™ board uses two forms of digital video internally:

1. 16 bit multiplexed YUV (4:2:5)
2. 24 bit RGB

Due to the design of the board, the analog inputs are converted as follows:

<u>Input:</u>	<u>Converted To:</u>
Composite	16 bit YUV
S-Video	16 bit YUV
Component	16 bit YUV
RGB	24 bit RGB

The analog video output chips allow the following data types:

<u>To Produce:</u>	<u>Format Required:</u>
Composite	16 bit YUV or 24 bit RGB
S-Video	16 bit YUV or 24 bit RGB
Component	16 bit YUV
RGB	24 bit RGB

This allows for the possible scenarios:

1. *Recording Composite, S-Video, or Component* - These inputs are converted to 16 bit YUV. These same outputs will appear in the correct color since their chips can use a 16 bit YUV input. The RGB chip however, which requires 24 bit RGB, will attempt to encode the 16 bit YUV as a *pink* output. Do not fear, for the data is being compressed correctly (the JPEG chips can process both formats). This will only inconvenience the user who chooses to monitor the recording of these inputs with an RGB monitor.
2. *Recording RGB* - This input is converted to 24 bit RGB. The composite, S-Video, and RGB outputs will appear in the correct color since their chips can use 24 bit RGB. The component chip, requiring 24 bit RGB to output RGB, will work correctly so *two RGB outputs will be available*. However, no component YUV output will be available. Again, the data is being compressed correctly. This will only inconvenience the user who chooses to monitor the recording of this input with a component monitor.
3. *Playback Component, but no RGB* - During playback/editing, if the user wishes to output component, the JPEG chips must output 16 bit YUV, a format that the RGB chip will decode into a *pink* output.
4. *Playback RGB, but no component* - During playback/editing, if the user wishes to output RGB, the JPEG chips must output 24 bit RGB, a format that the component chip will decode also as RGB, allowing for two RGB outputs but no component output.

Each of these situations is indicated in the output enable controls of the **DBCRecord** and **DMI 601™** software.

Q. How many outputs are receiving timecode at any one time?

A. Only one output receives timecode. There are limitations:

1. *Recording* - Whichever source is being recorded determines the output which will have the timecode burn-in window. The output format that corresponds to the chosen input format will have the timecode burn-in window. There are no exceptions to this.
2. *Playback/Editing* - The user can select any one output to have the timecode (both VITC and the burn-in window), except the RGB output on the 15-pin connector. If the user wishes, timecode can be present on

the RGB component output. The timecode will be seen only in the green component.

Q. Can the timecode burn-in window be placed on one output, but the actual striping of the timecode done on another output?

A. No. As stated above, both must be present on the same video format.

Q. When using the component output as an RGB output with timecode, why does the timecode burn-in window have a purple overlay?

A. The component chip was installed only to output YUV. It turned out that it could also output RGB. This is a bonus for those who need timecode on their RGB output. Because the board was not originally engineered for this purpose, one of the side-effects is that the timecode is output on the Green signal (normally the Y signal for component). For component, this is fine (Y is luminance, no color), but using RGB will cause the burn-in window to be green. Red and blue may also interfere and overlay the window as well giving it a purple appearance.

Q. Can Titling/Text Overlay be done on the Digital Broadcaster™?

A. Yes. You have two options to do Titling/Text Overlay:

1. *Separate computer with Genlock* - The machine with the **Digital Broadcaster™** is using all the bandwidth of the computer so Titling/Text Overlay is not possible with that computer. A separate computer could genlock to the video output of the **Digital Broadcaster™** and do the character generation as needed using an external genlock.
2. *Software* - Many software packages could be used to rotoscope the individual JPEG frames of a recording/animation with text.