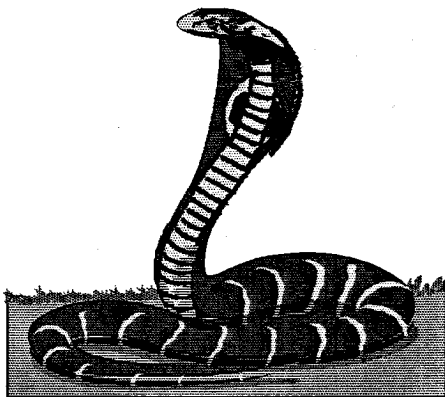




Cobra



68030 Accelerator for
Amiga A1200

INSTALLATION MANUAL

Manufactured in U.S.A. by DKB Software
Distributed in Australia by Comprepair.

I. Introduction

Thank you for purchasing the DKB Cobra expansion board. With this board, you can greatly enhance the power of your Amiga, by adding the following:

- * A 28 or 40 MHz 68030 processor, which makes your programs run up to six times faster than before.
- * Up to 128 megabytes of 32-bit wide expansion memory (Fast RAM), using one industry-standard SIMM module.
- * A hardware clock/calendar, whose long-life battery may be easily replaced by the user.
- * An optional math co-processor, with a clock speed up to 40 MHz. This chip performs math operations in complex graphics programs dozens of times faster than normal.
- * Software to move your Kickstart ROM into 32-bit RAM, for even faster performance, without using a Memory Management Unit (MMU).
- * An expansion connector for an optional SCSI controller (available separately), which can be easily installed, without taking your computer apart. SCSI allows you to add CD-ROM drives, removable hard drives, etc.
- * Most importantly, the DKB Cobra is backed by DKB's famous customer service. If you ever have a question about one of our products, you can call us and talk to an actual human being, who will help you solve your problem.

You can easily install the DKB Cobra, without taking your computer apart. Just lift the hatch off of the expansion port, plug the board in, replace the hatch, and you're ready to go in less than a minute. We hope you'll look through this manual, however, before plugging the board in, to familiarize yourself with its operation.

II. Adding Memory to the DKB Cobra

Purchasing a Memory Module (SIMM)

If the DKB Cobra board that you have purchased did not come with any memory installed, you will probably wish to purchase and install a memory module before plugging the board into your 1200, since doing so will make your 68030 accelerator work to its full potential. The DKB Cobra uses the same industry-standard Single In-line Memory Module (SIMM) as the Amiga 4000, so you should be able to purchase them from your Amiga dealer, or from one of the companies who advertise in Amiga-specific computer magazines like Video Toaster User or Amazing Computing. These SIMMs are available in 1, 2, 4, 8, 16, 32, 64, and 128 Megabyte sizes. If you are unable to find the proper SIMMs, please contact DKB for information on where to obtain them.

Installing the SIMM

SIMM modules were designed for easy installation. Place the DKB Cobra board in front of you, face down on the anti-static bag in which it was packed. Holding the module so that the side with the chips on it is facing down, tilt the front edge of the memory module down at a 45 degree angle and insert it into the socket (see Figure 1). With your thumbs at either side of the board, push the top edge of the module back until the plastic guide pins come through the holes at the sides, and the plastic retaining clips next to these guide pins latch firmly.

The DKB Cobra board will recognize the size of the module you have installed, and will automatically configure itself accordingly. You do not have to set any jumpers or run any programs to add the memory that you have installed.

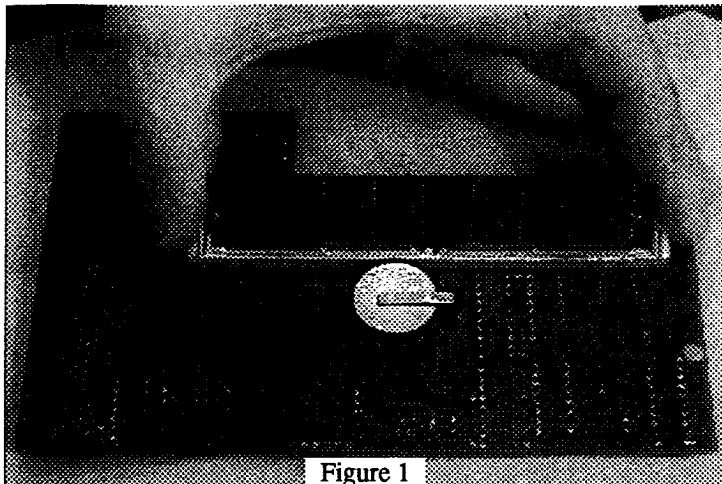


Figure 1

III. Installing the DKB Cobra Board in your Amiga 1200

- (1) Make sure your computer is turned off, and all cables are disconnected from the back.
- (2) Turn the 1200 over, so that the keyboard is facing down, on the side closest to you.
- (3) Remove the door covering the expansion slot by inserting a coin or flat-bladed screwdriver into the indentation, and prying off the cover (see Figure 2).
- (4) Holding the DKB Cobra board so that the chips are facing up, slide the board into the opening, tilting the L-shaped back edge down slightly. Make sure that the back edge of the board is resting on top of the small plastic lip along the back edge of the opening (see Figure 3).
- (5) Line up the connector on the board with the edge of the board in your computer. Push the board towards the connector until it is seated firmly.
- (6) Snap the plastic cover back into place
- (7) Turn your computer over, and re-connect the cables
- (8) Turn the computer on. If the power light does not come on, or the A1200 does not seem to start normally, turn the power off immediately, and re-check your connections.

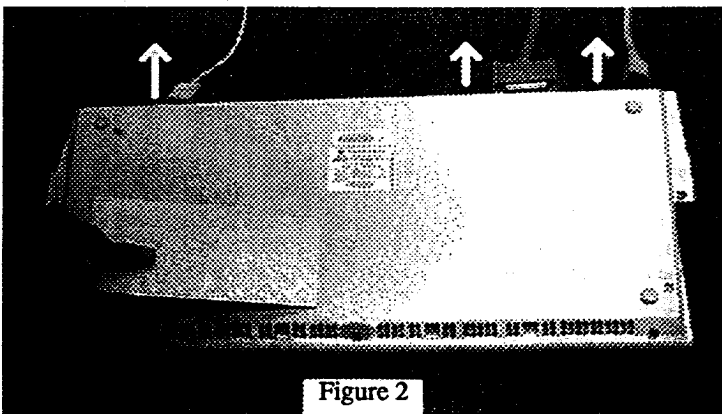


Figure 2

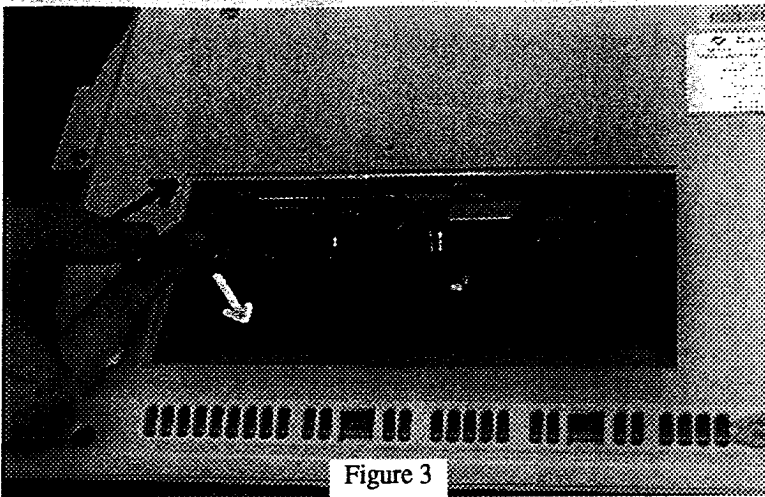


Figure 3

IMPORTANT: Do not operate the computer without replacing the plastic door which covers the expansion slot. This door serves to hold the board firmly in place.

III. The Math Co-Processor

Installing a Math Co-Processor

If you have purchased your DKB Cobra board without a math co-processor, you may wish to install one yourself. **CAUTION:** This math co-processor will not speed up all of your programs. Only a dozen or so math-intensive applications like 3D rendering programs, 24-bit graphics programs, image-processing programs, CAD programs and spreadsheets can actually use a math co-processor. For programs that can use a math co-processor, however, the addition of this chip speeds up operations by a factor of ten or more. Check your applications to see if they can take advantage of this chip before purchasing and installing it.

68881 and 68882 math chips come in two package types, PLCC and PGA. The DKB Cobra uses the PLCC type package. You can install almost any speed chip, up to 40 MHz, but if your math co-processor runs at any speed other than the main processor speed, you will also need to purchase an appropriate clock crystal. 68882 chips are usually faster (and more expensive) than 68881 chips, and chips with a faster clock speed run faster (and are more expensive) than chips with a slower clock speed.

You install the math co-processor chip by plugging it into the large square socket on your DKB Cobra board. **WARNING:** Make certain that the chip is correctly oriented. Pin 1, which is marked with a line or a dot in the corner of the chip, should be in the corner that is marked with the number "1" on the circuit board.

If you install a math chip rated at the same speed as the main processor, you can use the crystal that is already installed for use by the 68030 CPU by making sure that jumper J3 is set in the position marked "CPU".

If you install a math chip whose speed is not the same speed as the main 68030, you must also install an appropriate crystal oscillator (e.g. a 20 MHz crystal for a 20 MHz chip). To install this crystal, plug it into the socket marked XTAL2. **WARNING:** Make sure that the crystal is correctly oriented. Pin 1 (often marked with a dot) should be in the corner with the beveled edge. When you use a second crystal, you must change jumper J3 to the position marked ALT.

IV. The RemapKS Program

If you have installed a memory module on your DKB Cobra board, you can use the RemapKS program on the included disk to move the Amiga Kickstart software into this memory. This procedure makes 512K of

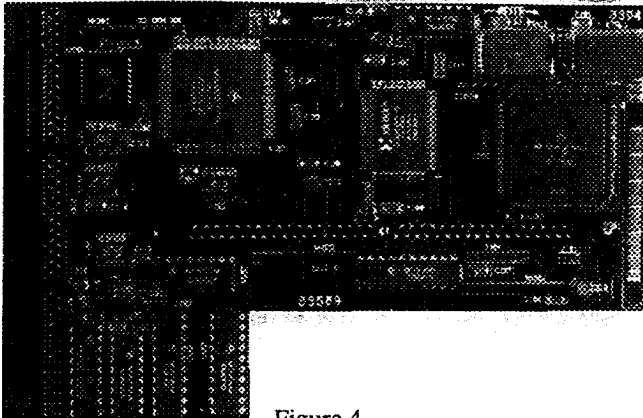


Figure 4

memory unavailable for your use, but speeds up operation of your computer even further.

To install the program, insert the DKB Cobra floppy disk into your disk drive, and double click on its icon. Drag the icon for the RemapKS program into the WBStartup drawer on the Workbench partition of your hard drive (usually named "System3.0), or your bootup floppy disk. This program will automatically be run every time you start your computer. If you decide that you don't want the program run automatically, simply drag its icon into another drawer, such as the one marked "Storage". For further information on the software provided with the DKB Cobra, see the "Readme" file on the disk.

V. Trouble Shooting

The DKB Cobra is easy to use, and normally its operation should be trouble free. If you are having a problem, however, we suggest that you check the following:

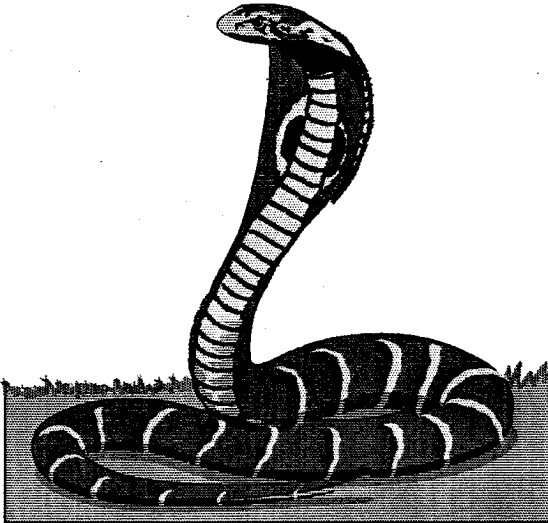
- (1) Is the power supply properly connected to the 1200, and to the wall outlet?. Make sure that there is power coming from the wall outlet.
- (2) Are all expansion devices and cables correctly and firmly attached to the computer?
- (3) Is the SIMM modules (if used) correctly seated in the socket and locked into place? Is the DKB Cobra board itself seated firmly in the expansion socket?
- (4) Is a PCMCIA card installed? If so, try removing the card and starting the computer.
- (5) If the real time clock does not keep time when the computer is turned off, you may need to replace the battery. Use a CR2032 type, available at most drug, hardware, or convenience stores.
- (6) Check the metal RF shield to make certain that it is not touching the 150 pin connector on the DKB Mongoose board.

If you are unable to get your computer working properly, or are experiencing any difficulty in any step of the installation process, please do not hesitate to call us.

Our Technical Support number is (810) 348-3755.

**Manufactured by
DKB Software**

P.O. Box 438
Wixom, Michigan,
U.S.A. 48393-0438



**Distributed in Australia by
Comprepair**

44 Pascoe Vale Rd.
Moonee Ponds,
Victoria, 3039
Phone 03 9326-0133
Fax 03 9370-8352